



£750 Monthly

Sutton Road, Walsall

Flat | 2 Bedrooms | 1 Bathroom

01922 322988



www.remaxlocalestateagents.co.uk



Step Inside

Key Features

- COSY 2-BED APT FOR RENT
- INVITING LIVING
- QUICK ACCESS TO SHOPS
- NEAR WALSALL ARBORETUM
- CITY COMFORT MEETS SUBURBAN EASE
- READY TO MOVE IN
- CONVENIENT 1ST-FLOOR LOCATION

Property Description

Cozy 2-Bed Apartment for Rent!

Welcome to this comfy 2-bedroom apartment, your perfect spot for easy, relaxed living! Situated on the 1st floor, this delightful space offers both comfort and convenience.

Key Features:

Warm Living Room: Kickstart your day with a coffee on the balcony in the inviting living room.

Modern Kitchen: The kitchen is a stylish and functional hub where you can effortlessly prepare meals.

Sleek Tiled Bathroom: Treat yourself to a refreshing experience in the contemporary, fully tiled bathroom.

Well-Maintained: Enjoy the nice and neat feel in every corner of your new home.

Convenient Location: Just around the corner from Walsall town centre, you're near shops, entertainment, and the peaceful vibes of Walsall Arboretum Park.

Secure Parking: Enjoy stress-free parking with the added convenience of an underground car park.

Pet-Free and Smoke-Free: Please note, to ensure everyone's well-being, pets and smoking are not allowed in this apartment.

Ready to enjoy city comfort with suburban ease? Your cosy new home is ready and waiting!

Call now to book a viewing and make this delightful apartment yours.

Main Particulars

Cozy 2-Bed Apartment for Rent!

Welcome to this comfy 2-bedroom apartment, your perfect spot for easy, relaxed living! Situated on the 1st floor, this delightful space offers both comfort and convenience.

Key Features:

Warm Living Room: Kickstart your day with a coffee on the balcony in the inviting living room.

Modern Kitchen: The kitchen is a stylish and functional hub where you can effortlessly prepare meals.

Sleek Tiled Bathroom: Treat yourself to a refreshing experience in the contemporary, fully tiled bathroom.

Well-Maintained: Enjoy the nice and neat feel in every corner of your new home.

Convenient Location: Just around the corner from Walsall town centre, you're near shops, entertainment, and the peaceful vibes of Walsall Arboretum Park.

Secure Parking: Enjoy stress-free parking with the added convenience of an underground car park.

Pet-Free and Smoke-Free: Please note, to ensure everyone's well-being, pets and smoking are not allowed in this apartment.

Ready to enjoy city comfort with suburban ease? Your cosy new home is ready and waiting!

Call now to book a viewing and make this delightful apartment yours.

Living Room - 17.9 x 11.10 (58'8" x 36'5") -

Kitchen - 9.10 x 8.10 (29'10" x 26'6") -

Bathroom - 9.10 x 5.3 (29'10" x 17'4") -

Main Bedroom - 14.4 x 11.10 (47'2" x 36'5") -

Bedroom 2 - 13.1 x 6.3 (42'11" x 20'8") -

238286_S169983_IMG_07_0001_max_656x437.jpeg



238286_S169983_IMG_02_0001_max_656x437
(1).jpeg



238286_S169983_IMG_06_0001_max_656x437
(1).jpeg



238286_S169983_IMG_01_0001_max_656x437
(1).jpeg

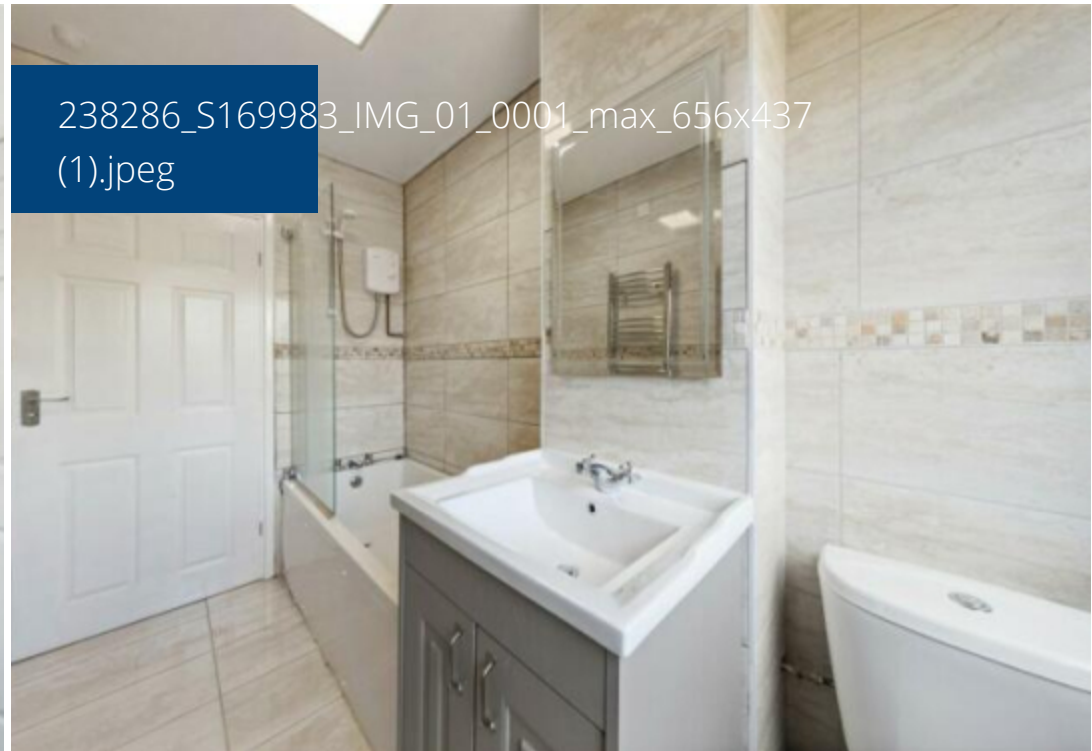




Image not found

This floorplan is for illustrative purposes only and the location of doors, windows and other items are approximate.

Agents notes: All measurements are approximate and for general guidance only and whilst every attempt has been made to ensure accuracy, they must not be relied on. The fixtures, fittings and appliances referred to have not been tested and therefore no guarantee can be given that they are in working order. Internal photographs are reproduced for general information and it must not be inferred that any item shown is included with the property. Copyright © 2025 14430791 Registered Office: , 549 Bloxwich Road, Bloxwich, WS3 2XD

Energy performance certificate (EPC)

Certificate contents

- How to letting this property
- Energy rating and score
- Breakdown of property's energy performance
- How this affects your energy bill
- Impact on the environment
- What you could achieve more
- Why to contact about this certificate
- Other certificates for this property

Share this certificate

- Print
- Download to clipboard
- Send

Property type Flat house flat

Total floor area 234 square metres

Rules on letting this property

Properties can be let if they have an energy rating from A to E

You can also [go online for feedback on the condition and energy rating](#)

Energy rating and score

This property's energy rating is D. If the floor is slated to be B

[See how to improve this property's energy efficiency](#)

Score	Energy rating	Current	Potential
91+	A		91+
81-90	B		81+
69-80	C		
55-68	D	55	
39-54	E		
21-38	F		
1-20	G		

The graph shows this property's current and potential energy rating

Telephone: 01922 322988



www.remaxlocalestateagents.co.uk