



£210,000 Offers Over

Roebuck Road, Walsall

End of Terrace | 3 Bedrooms | 1 Bathroom

01922 322988



www.remaxlocalestateagents.co.uk



Step Inside

Key Features

- SPACIOUS THREE-BEDROOM END-TERRACE HOME
- NEWLY FITTED ROOF
- MODERN KITCHEN WITH HIGH-END FINISHES
- CONTEMPORARY FAMILY BATHROOM
- LARGE DRIVEWAY WITH AMPLE PARKING
- GENEROUS REAR GARDEN
- BRIGHT & AIRY LIVING ROOM WITH FEATURE FIREPLACE
- EAT-IN KITCHEN WITH STYLISH DECOR
- GROUND FLOOR WC
- EXCELLENT LOCATION WITH GREAT TRANSPORT LINKS

Property Description

STUNNING 3-BED END-TERRACE HOME WITH LARGE GARDEN & DRIVEWAY - WS3

Property Summary:

This immaculately presented three-bedroom end-terrace home in WS3 is a fantastic opportunity for families or professionals looking for a modern, move-in-ready property.

This home offers comfort and practicality with a newly fitted roof and boiler system, a stylish kitchen and bathroom, and a generous rear garden. The large driveway provides ample off-road parking, in a desirable location.

Main Particulars

STUNNING 3-BED END-TERRACE HOME WITH LARGE GARDEN & DRIVEWAY - WS3

Property Summary:

This immaculately presented three-bedroom end-terrace home in WS3 is a fantastic opportunity for families or professionals looking for a modern, move-in-ready property.

This home offers comfort and practicality with a newly fitted roof and boiler system, a stylish kitchen and bathroom, and a generous rear garden. The large driveway provides ample off-road parking, in a desirable location.

Ground Floor: -

Living Room - 5.13m x 3.30m (16'9" x 10'9") - A bright and spacious living area with a stunning feature fireplace, large windows for natural light, and a neutral colour scheme, making it the perfect space to relax and unwind.

Eat-In Kitchen - 3.18m x 4.69m (10'5" x 15'4") - A beautifully designed modern kitchen, boasting white shaker-style units, and wood-effect worktops,. There is plenty of storage and workspace, along with room for dining - ideal for family meals or entertaining guests.

Ground Floor Wc - 1.30m x 0.96m (4'3" x 3'1") - A handy downstairs WC, adding convenience for guests and family members.

First Floor: -

Primary Bedroom - 3.33m x 2.92m (10'11" x 9'6") - A well-sized master bedroom featuring built-in mirrored wardrobes, plush carpeting, and a neutral decor to create a relaxing retreat.

Bedroom 2 - 4.20m x 3.12m (13'9" x 10'2") - A generous second bedroom, offering flexible space for a guest room, children's bedroom, or even a home office.

Bedroom 3 - 2.72m x 2.92m (8'11" x 9'6") - A well-proportioned third bedroom, perfect for a child's room or study space.

Modern Family Bathroom

- 2.99m x 1.87m (9'9" x 6'1") - A sleek, fully-tiled bathroom with a P-shaped bathtub and overhead shower, a stylish vanity unit, and a heated towel rail for added luxury.

Outdoor Space: -

Large Driveway - This property benefits from a spacious driveway, providing ample off-road parking

Generous Rear Garden - A well-maintained garden, featuring a patio seating area, a lawned space for children to play, and mature shrubs, making it ideal for outdoor entertaining or relaxing.

This property won't be on the market for long! With a modern kitchen, stylish bathroom, and generous outdoor space, it's a dream home waiting for its next owner. Book a viewing today!

IMG_1484.jpeg



IMG_2181.jpeg

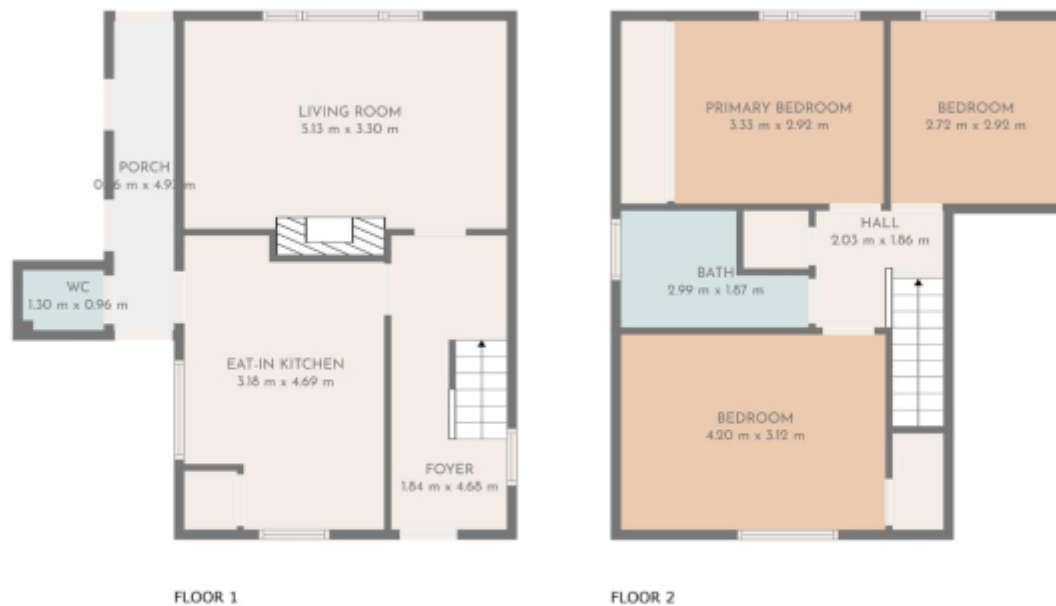


IMG_1798.jpeg



IMG_1854.jpeg





TOTAL: 90 m²
 FLOOR 1: 43 m²; FLOOR 2: 47 m²
 EXCLUDED AREAS: PORCH: 5 m²

FLOOR PLAN CREATED BY CLUSECASA APP: MEASUREMENTS DESIGNED HIGHLY RELIABLE BUT NOT GUARANTEED.

This floorplan is for illustrative purposes only and the location of doors, windows and other items are approximate.

Agents notes: All measurements are approximate and for general guidance only and whilst every attempt has been made to ensure accuracy, they must not be relied on. The fixtures, fittings and appliances referred to have not been tested and therefore no guarantee can be given that they are in working order. Internal photographs are reproduced for general information and it must not be inferred that any item shown is included with the property. Copyright © 2025 14430791 Registered Office: , 549 Bloxwich Road, Bloxwich, WS3 2XD

English | Comments

Energy performance certificate (EPC)

100 Woodstock Road Walsley, Walsley, Walsley, Walsley Walsley, Walsley, Walsley, Walsley	Energy rating C	Date issued: 10 March 2020 Valid until: 10 March 2025
--	----------------------------------	--

Property type
End-terrace house

Total floor area
67 square metres

Rules on letting this property

Properties can be let only from a rating rating from this is.

The current rating is for properties in the category and is not a recommendation for the property to be let.

Energy rating and score

The property's energy rating is C for the current rating is.

See how to improve the energy rating of this property.

Score	Energy rating	Current	Potential
85+	A		
81-84	B		
69-80	C	69 C	82 B
55-68	D		
35-54	E		

Telephone: 01922 322988



www.remaxlocalestateagents.co.uk