



£170,000 Fixed Price

Cheltenham Drive, Birmingham

End of Terrace | 3 Bedrooms | 1 Bathroom

01922 322988



www.remaxlocalestateagents.co.uk



Step Inside

Key Features

- End Terrace House
- Three Bedrooms
- Fitted Kitchen With Dining Area
- One Reception Room
- One Bathroom
- Separate W.C.
- Garden
- Central Heating
- Double Glazing
- Conservatory

Property Description

RE/MAX are delighted to offer this three bedroom end terrace house located close to local amenities and transport links.

The property comprises of a lounge, fitted kitchen with dining area, conservatory, three bedrooms with all having fitted wardrobes, family bathroom and a separate W.C.

The property also benefits from having an enclosed rear garden.

Please call or email to book in a viewing!

Main Particulars

RE/MAX are delighted to offer this three bedroom end terrace house located close to local amenities and transport links.

The property comprises of a lounge, fitted kitchen with dining area, conservatory, three bedrooms with all having fitted wardrobes, family bathroom and a separate W.C.

The property also benefits from having an enclosed rear garden.

Please call or email to book in a viewing!

4.jpg



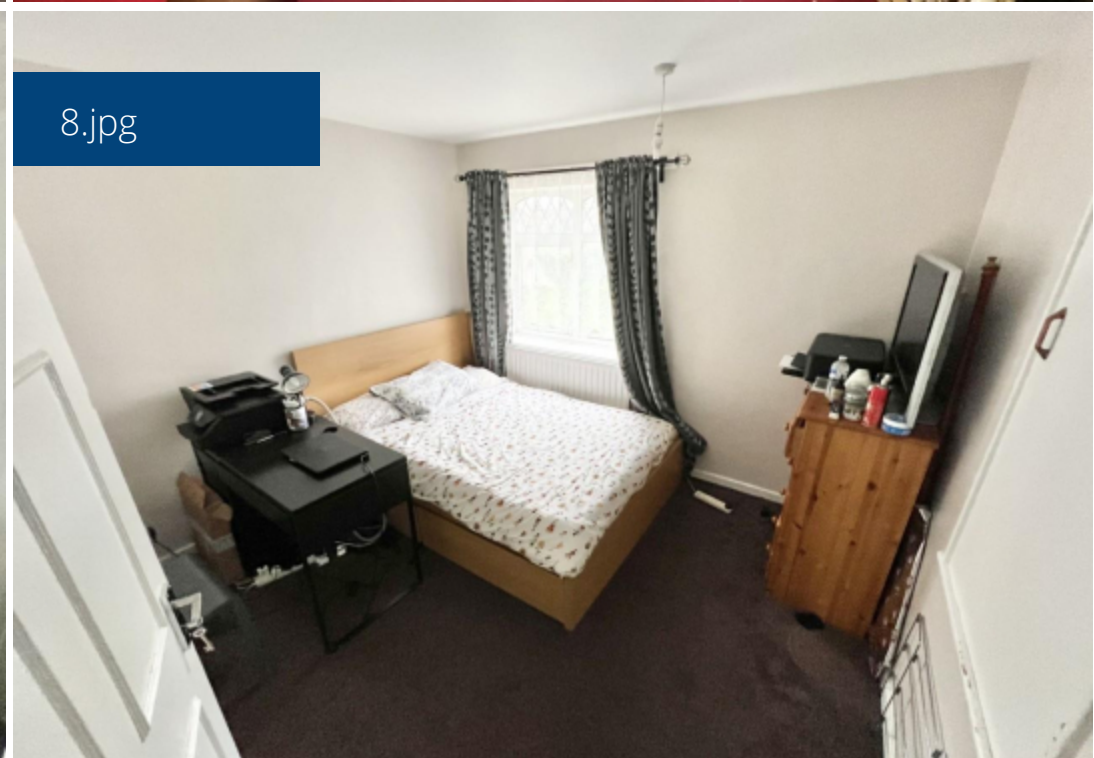
1.jpg

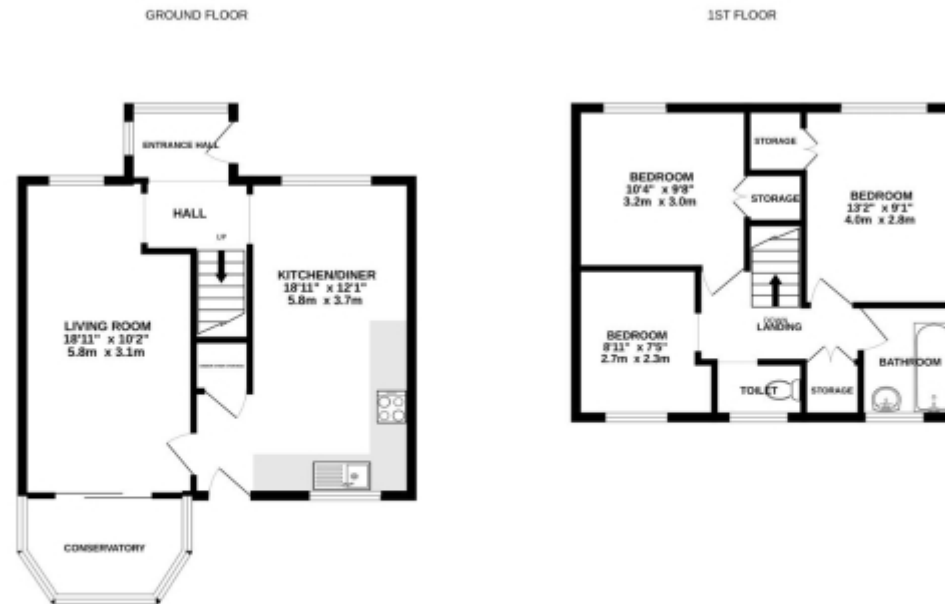


6.jpg



8.jpg

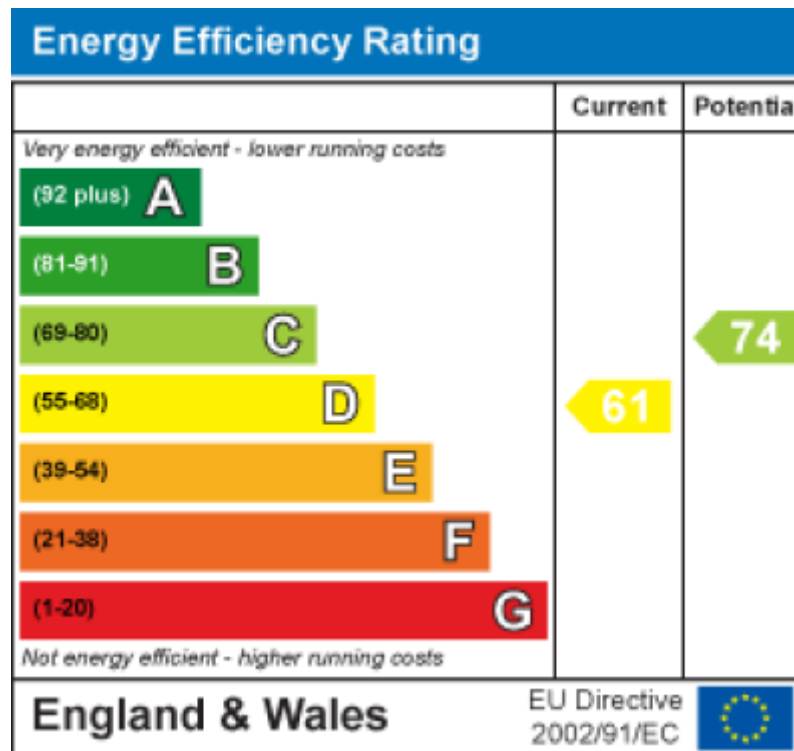




Whilst every attempt has been made to ensure the accuracy of the floorplan contained herein, measurements of doors, windows, rooms and any other items are approximate and no responsibility is taken for any error, omission or misstatement. This plan is for illustrative purposes only and should be used as such by any prospective purchaser. The services, systems and appliances shown have not been tested and no guarantee as to their operability or efficiency can be given.
Made with Metagap 12/2024

This floorplan is for illustrative purposes only and the location of doors, windows and other items are approximate.

Agents notes: All measurements are approximate and for general guidance only and whilst every attempt has been made to ensure accuracy, they must not be relied on. The fixtures, fittings and appliances referred to have not been tested and therefore no guarantee can be given that they are in working order. Internal photographs are reproduced for general information and it must not be inferred that any item shown is included with the property. Copyright © 2025 14430791 Registered Office: , 549 Bloxwich Road, Bloxwich, WS3 2XD



Telephone: 01922 322988



www.remaxlocalestateagents.co.uk