



£900 Monthly

Myton Drive, Shirley, Solihull

Flat | 2 Bedrooms | 1 Bathroom

01922 322988



www.remaxlocalestateagents.co.uk



Step Inside

Key Features

- Available Immediately
- Ground Floor Maisonette
- Two Double Bedrooms
- New Kitchen
- Redecorated Throughout
- Cul-De-Sac Location
- Conservatory
- Large Private Garden
- Central Heating And Double Glazing
- Unfurnished

Property Description

AVAILABLE NOW *OPEN HOUSE WEDNESDAY 20TH MARCH AT 1PM*

RE/MAX are delighted to offer this well presented two bedroom ground floor maisonette in a cul-de-sac location.

The property comprises of a lounge, new kitchen with integrated appliances, conservatory, two double bedrooms and a family bathroom.

The property also benefits from being redecorated throughout and having a large private rear garden.

Please call or email to book in a viewing!

Main Particulars

AVAILABLE NOW *OPEN HOUSE WEDNESDAY 20TH MARCH AT 1PM*

RE/MAX are delighted to offer this well presented two bedroom ground floor maisonette in a cul-de-sac location.

The property comprises of a lounge, new kitchen with integrated appliances, conservatory, two double bedrooms and a family bathroom.

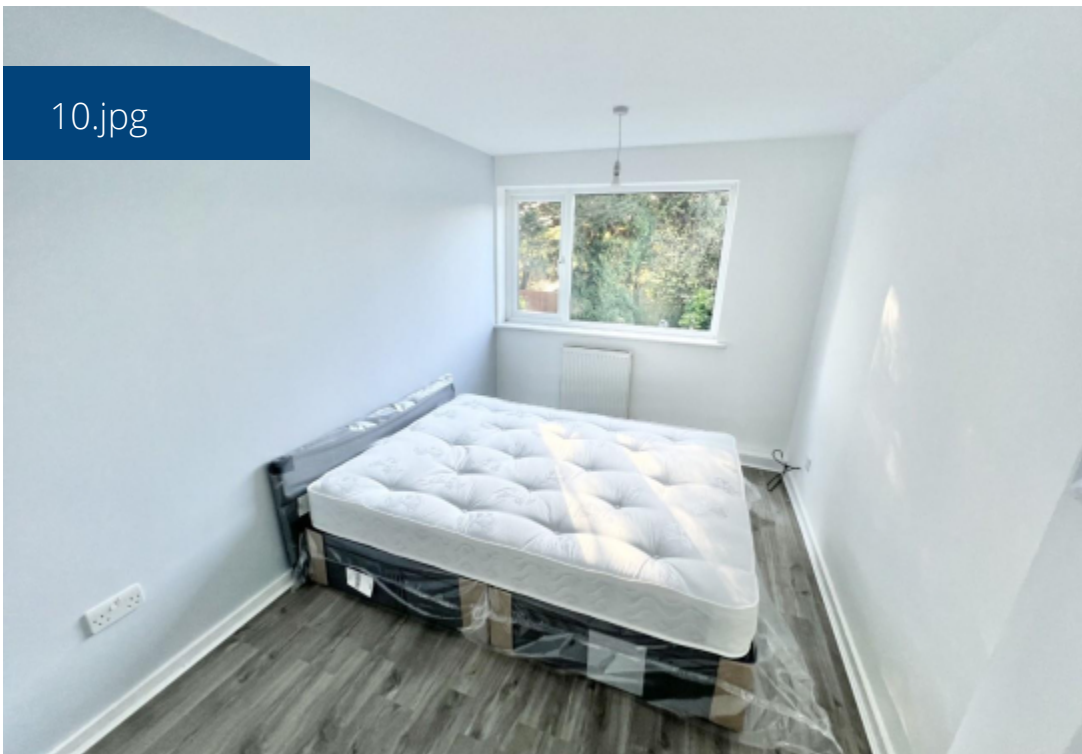
The property also benefits from being redecorated throughout and having a large private rear garden.

Please call or email to book in a viewing!

2.jpg



10.jpg

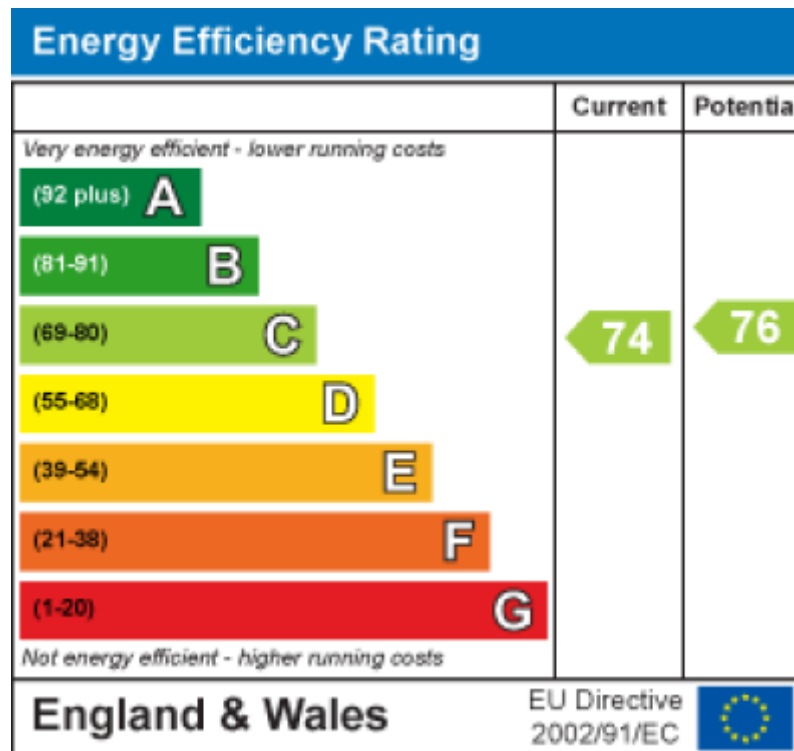


9.jpg



7.jpg





Telephone: 01922 322988



www.remaxlocalestateagents.co.uk