



£1,050 Monthly

East Meadway, Birmingham

Semi-Detached House | 2 Bedrooms | 1 Bathroom

01922 322988



[www.remaxlocalestateagents.co.uk](http://www.remaxlocalestateagents.co.uk)



# Step Inside

---

## Key Features

- Available 19th August
- Two Double Bedrooms
- Semi-Detached House
- Spacious Lounge
- Conservatory
- Off Road Parking
- Large Garden
- Central Heating
- Double Glazing
- Unfurnished

## Property Description

\*OPEN HOUSE SATURDAY 17TH AUGUST AT 2PM\*

Well presented two bedroom semi-detached house in a much sought after location close to amenities and transport links.

The property will be unfurnished and briefly comprises of a spacious lounge, fitted kitchen, two double bedrooms and a family bathroom.

The property also benefits from having a large enclosed rear garden and off road parking..

Please call or email to book in a viewing!

## Main Particulars

\*OPEN HOUSE SATURDAY 17TH AUGUST AT 2PM\*

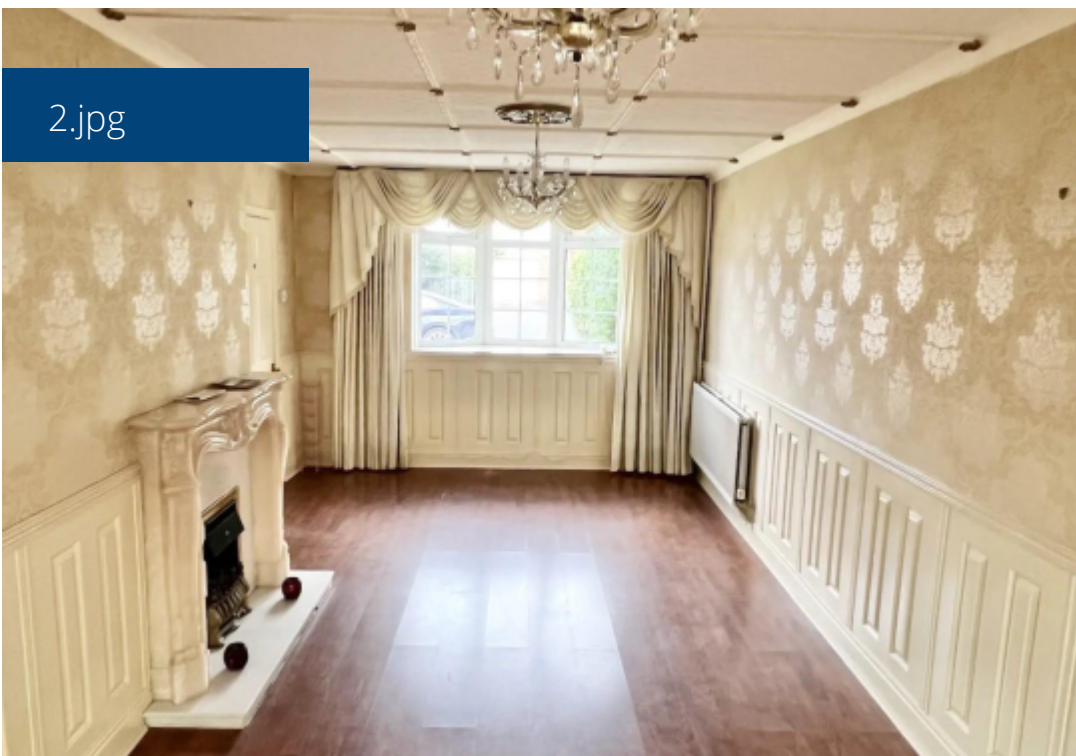
Well presented two bedroom semi-detached house in a much sought after location close to amenities and transport links.

The property will be unfurnished and briefly comprises of a spacious lounge, fitted kitchen, two double bedrooms and a family bathroom.

The property also benefits from having a large enclosed rear garden and off road parking..

Please call or email to book in a viewing!

2.jpg



4.jpg




5.jpg



6.jpg



## Energy Efficiency Rating

	Current	Potential
Very energy efficient - lower running costs		
(92 plus) <b>A</b>		
(81-91) <b>B</b>		
(69-80) <b>C</b>		72
(55-68) <b>D</b>	59	
(39-54) <b>E</b>		
(21-38) <b>F</b>		
(1-20) <b>G</b>		
Not energy efficient - higher running costs		
<b>England &amp; Wales</b>	EU Directive 2002/91/EC	

Telephone: 01922 322988



[www.remaxlocalestateagents.co.uk](http://www.remaxlocalestateagents.co.uk)