



£1,700 Monthly

Coppice Walk, Cheswick Green, Solihull

Detached House | 4 Bedrooms | 2 Bathrooms

01922 322988



www.remaxlocalestateagents.co.uk



Step Inside

Key Features

- Available 1st April
- Detached House
- Four Bedrooms
- Three Reception Rooms
- Driveway And Garage
- Breakfast Kitchen
- En-Suite, Family Bathroom, Separate W.C. and Downstairs W.C.
- Large Rear Garden
- Sun Room
- Central Heating And Double Glazing

Property Description

AVAILABLE 1ST APRIL *OPEN HOUSE WEDNESDAY 15TH MARCH AT 5.30PM*

RE/MAX are delighted to offer this well presented four bedroom detached house In a sought after Solihull location.

The property will be partly furnished and briefly comprises of three reception rooms plus a sun room, fitted kitchen with breakfast area, four bedrooms with the master having an en-suite, family bathroom, separate W.C and a downstairs W.C.

The property also benefits from having a large enclosed rear garden, driveway and a garage.

Please call or email to book in a viewing!

Main Particulars

AVAILABLE 1ST APRIL *OPEN HOUSE WEDNESDAY 15TH MARCH AT 5.30PM*

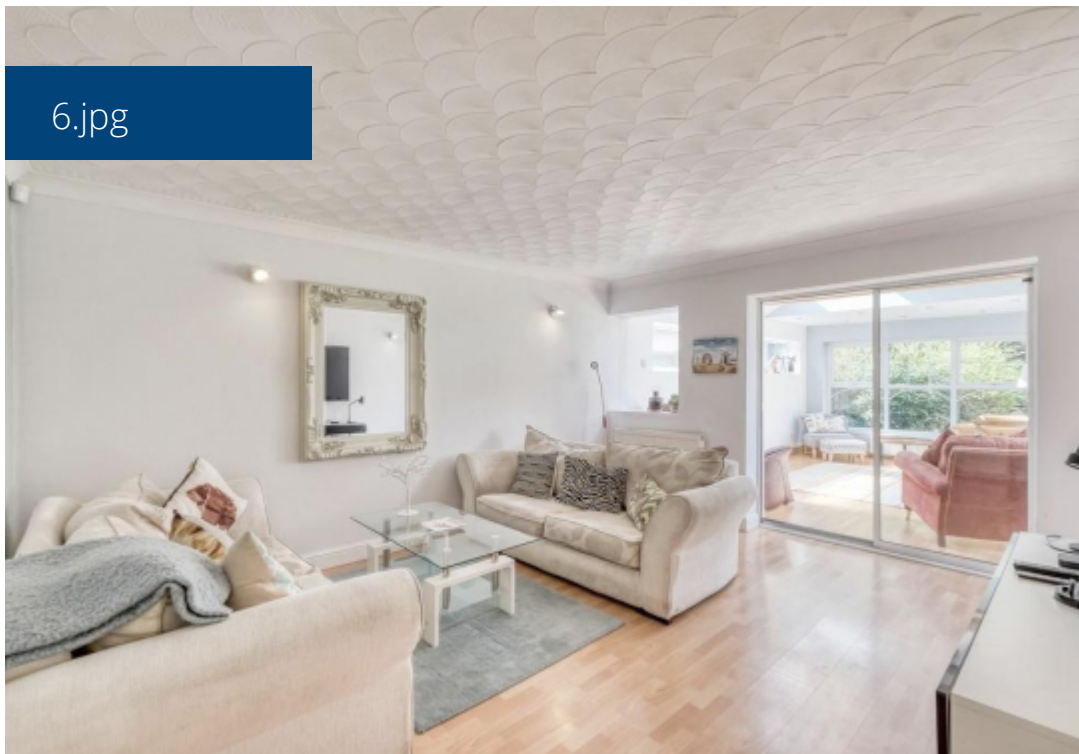
RE/MAX are delighted to offer this well presented four bedroom detached house In a sought after Solihull location.

The property will be partly furnished and briefly comprises of three reception rooms plus a sun room, fitted kitchen with breakfast area, four bedrooms with the master having an en-suite, family bathroom, separate W.C and a downstairs W.C.

The property also benefits from having a large enclosed rear garden, driveway and a garage.

Please call or email to book in a viewing!

6.jpg



7.jpg



3.jpg



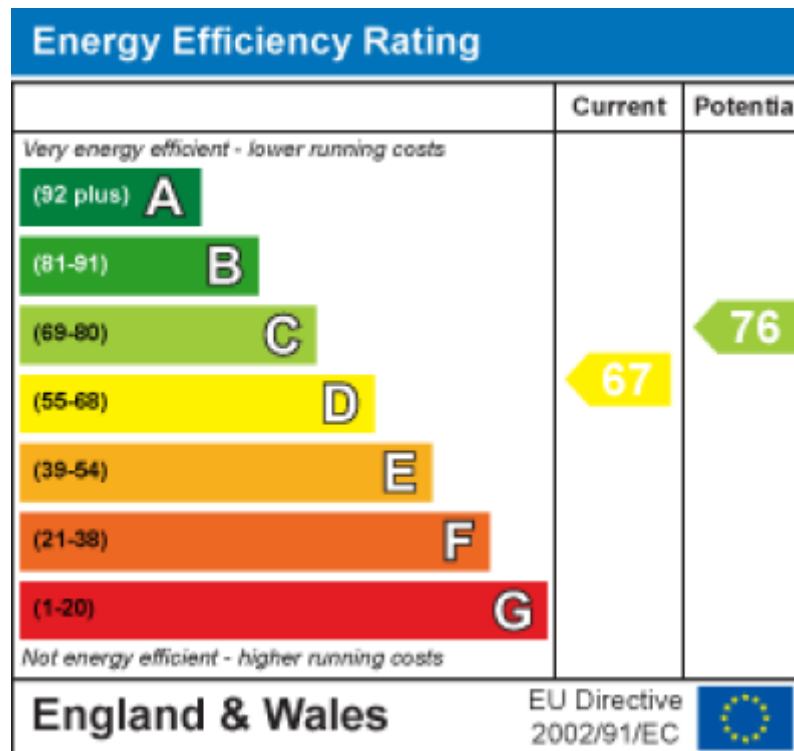
2.jpg





This floorplan is for illustrative purposes only and the location of doors, windows and other items are approximate.

Agents notes: All measurements are approximate and for general guidance only and whilst every attempt has been made to ensure accuracy, they must not be relied on. The fixtures, fittings and appliances referred to have not been tested and therefore no guarantee can be given that they are in working order. Internal photographs are reproduced for general information and it must not be inferred that any item shown is included with the property. Copyright © 2025 14430791 Registered Office: , 549 Bloxwich Road, Bloxwich, WS3 2XD



Telephone: 01922 322988



www.remaxlocalestateagents.co.uk