



£1,250 Monthly

Chesterfield Close, Birmingham

End of Terrace | 3 Bedrooms | 1 Bathroom

01922 322988



[www.remaxlocalestateagents.co.uk](http://www.remaxlocalestateagents.co.uk)



# Step Inside

---

## Key Features

- Available Immediately
- End Of Terrace House
- Three Bedrooms
- Cul-De-Sac Location
- Modern Kitchen With Integrated Appliances
- Spacious Lounge
- Large Driveway
- Garage
- Garden
- Central Heating And Double Glazed

## Property Description

\*AVAILABLE NOW\* \*OPEN HOUSE SATURDAY 14TH SEPTEMBER AT 10.30AM\*

RE/MAX are delighted to offer this well presented three bedroom end of terrace house in a popular cul-de-sac location.

The property will be unfurnished and briefly comprises of a spacious lounge, modern kitchen with integrated appliances including a dishwasher, three bedrooms and a shower room.

The property also benefits from having an enclosed rear garden and a large driveway.

Please call or email to book in a viewing!

## Main Particulars

\*AVAILABLE NOW\* \*OPEN HOUSE SATURDAY 14TH SEPTEMBER AT 10.30AM\*

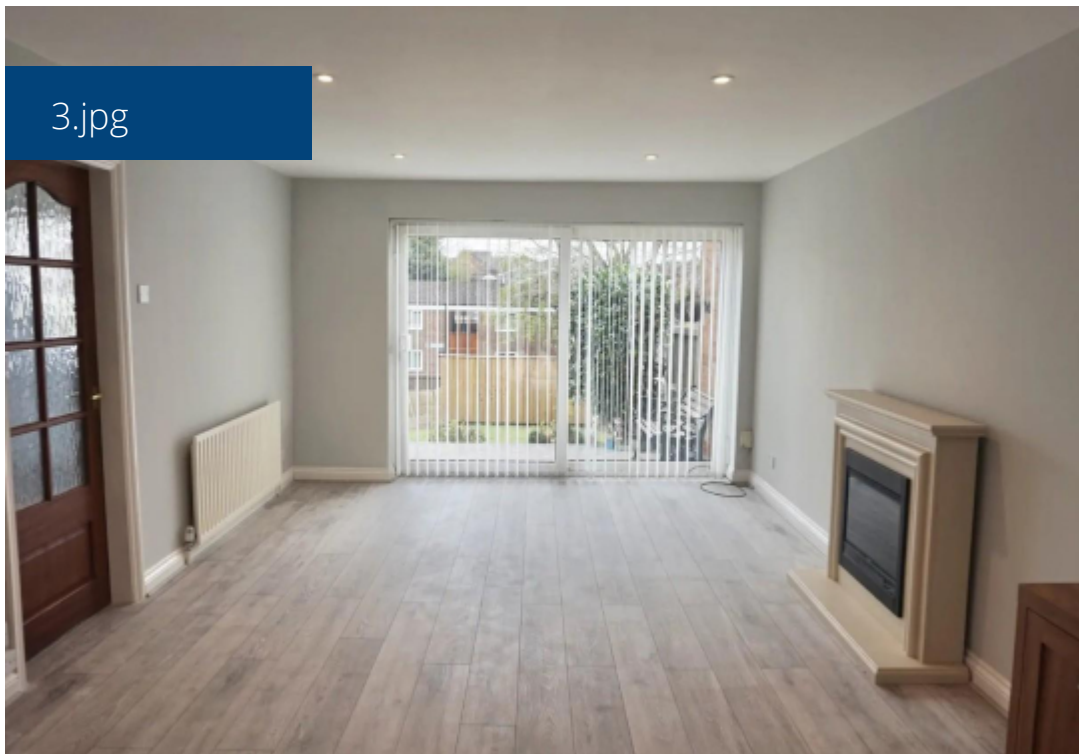
RE/MAX are delighted to offer this well presented three bedroom end of terrace house in a popular cul-de-sac location.

The property will be unfurnished and briefly comprises of a spacious lounge, modern kitchen with integrated appliances including a dishwasher, three bedrooms and a shower room.

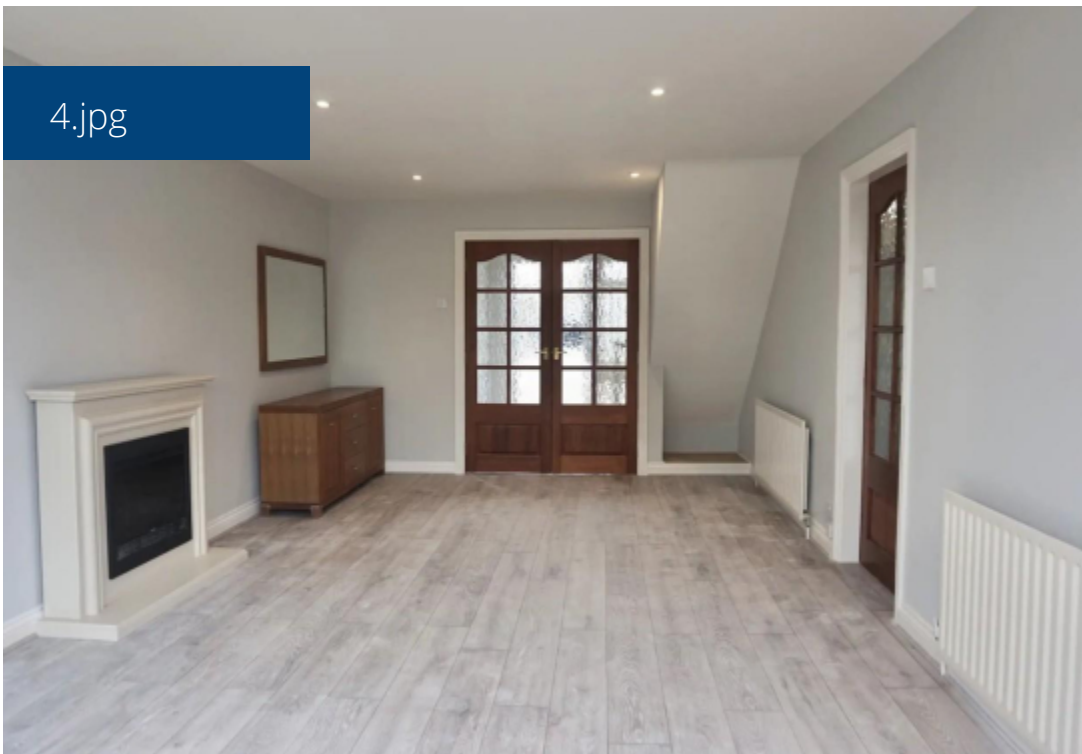
The property also benefits from having an enclosed rear garden and a large driveway.

Please call or email to book in a viewing!

3.jpg



4.jpg

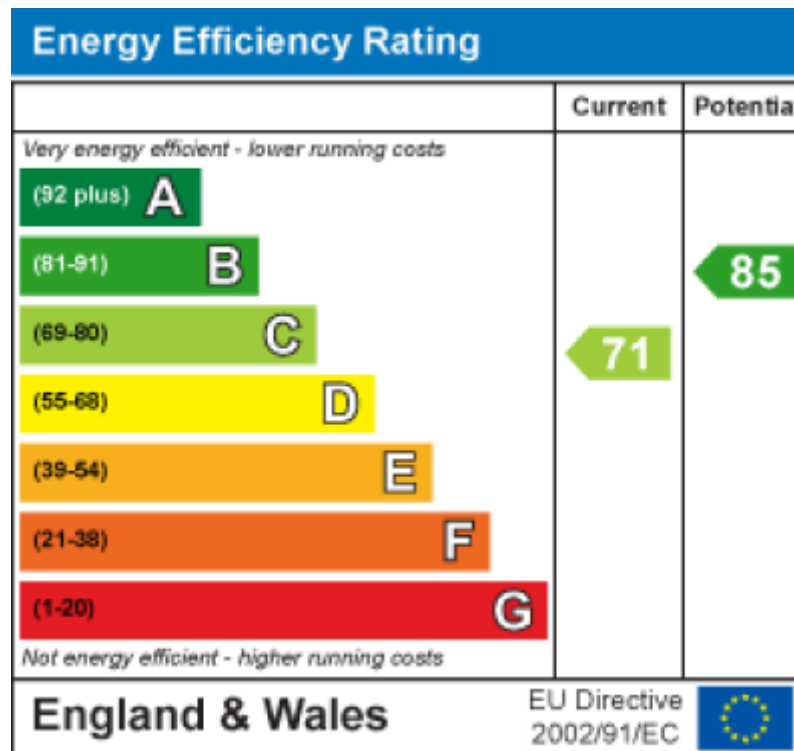


5.jpg



6.jpg





Telephone: 01922 322988



[www.remaxlocalestateagents.co.uk](http://www.remaxlocalestateagents.co.uk)