



£1,300 Monthly

Silver Court Gardens, Brownhills

Terraced House | 3 Bedrooms | 2 Bathrooms

01922 322988



www.remaxlocalestateagents.co.uk



Step Inside

Key Features

- THREE DOUBLE BEDROOMS
- SEPARATE OFFICE OR FOURTH GUEST ROOM
- TWO BATHROOMS PLUS A GROUND FLOOR W.C.
- MODERN KITCHEN WITH INTEGRATED APPLIANCES
- SPACIOUS LOUNGE WITH LARGE FRONT WINDOW
- MASTER BEDROOM WITH EN-SUITE
- LIGHT & AIRY INTERIOR THROUGHOUT
- PRIVATE REAR GARDEN WITH PATIO
- DOUBLE DRIVEWAY PARKING
- POPULAR WS8 LOCATION

Property Description

STYLISH THREE-BEDROOM TOWNHOUSE WITH OFFICE, DOUBLE DRIVEWAY & GARDEN IN WS8

This modern, three-storey townhouse offers spacious, flexible living across three floors and is located in the desirable Silver Court Gardens development in Brownhills, WS8.

Featuring a private double driveway, generous rear garden, modern kitchen-diner, and three well-sized bedrooms plus an additional office or fourth guest room - this rental home ticks all the boxes.

Main Particulars

STYLISH THREE-BEDROOM TOWNHOUSE WITH OFFICE, DOUBLE DRIVEWAY & GARDEN IN WS8

This modern, three-storey townhouse offers spacious, flexible living across three floors and is located in the desirable Silver Court Gardens development in Brownhills, WS8.

Featuring a private double driveway, generous rear garden, modern kitchen-diner, and three well-sized bedrooms plus an additional office or fourth guest room - this rental home ticks all the boxes.

Entrance Hallway - Welcoming entrance with fresh neutral décor, plush carpet underfoot, and access to the lounge and stairs.

Lounge - 4.20m x 3.60m (13'9" x 11'9") - Bright and airy space with a large front-facing window, neutral carpet, and modern finishes.

Kitchen/Diner - 4.60m x 3.00m (15'1" x 9'10") - Stunning L-shaped kitchen with integrated oven, hob, and extractor, white gloss cabinetry, and ample space for dining. French doors lead to the rear garden.

Downstairs W.C - 1.60m x 1.00m (5'2" x 3'3") - Handy cloakroom with modern white suite and tiled flooring.

Bedroom 1 - 4.60m x 3.00m (15'1" x 9'10") - Large master suite with en-suite bathroom, dormer window to the front, and built-in wardrobe.

Bedroom 2 - 4.60m x 3.00m (15'1" x 9'10") - Spacious double bedroom with two rear-facing windows and plush carpet.

Bedroom 3 - 3.20m x 2.50m (10'5" x 8'2") - Comfortable double with front-facing window and built-in storage.

Office/Guest Room - 3.20m x 2.00m (10'5" x 6'6") - Ideal for working from home or occasional guests, complete with a skylight and neutral décor.

Family Bathroom - 2.00m x 2.00m (6'6" x 6'6") -

En-Suite Bathroom - 2.30m x 1.80m (7'6" x 5'10") - Modern shower room with large enclosed cubicle, W.C., basin, and stylish tiling.

Rear Garden

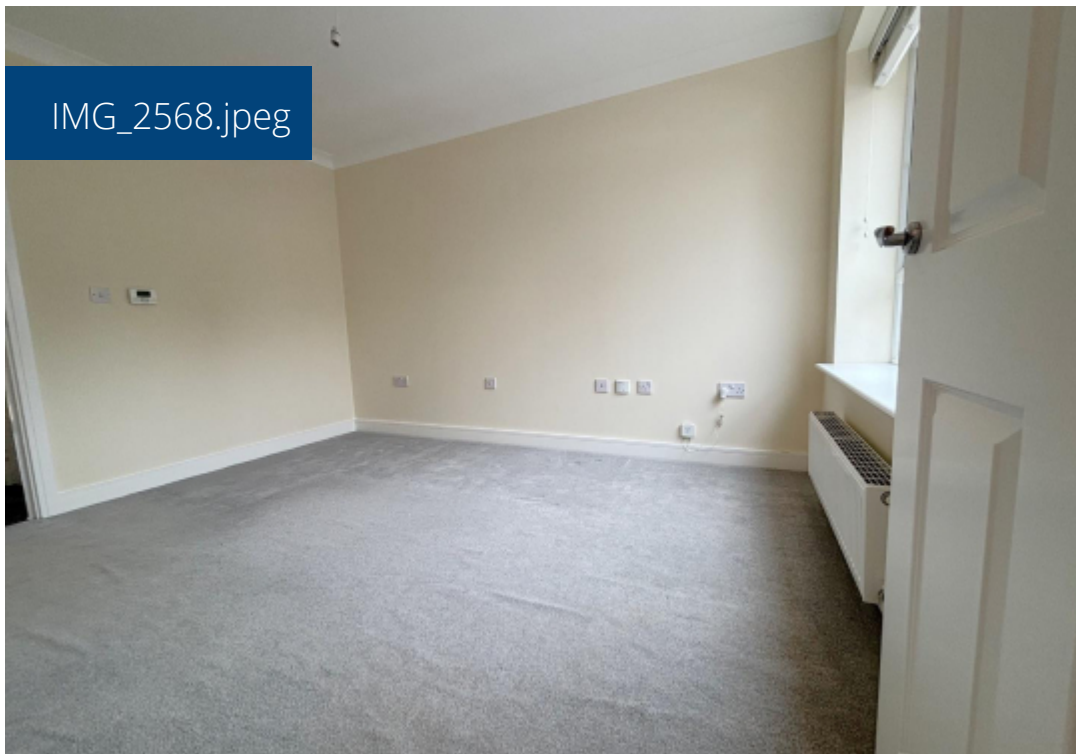
- A generous garden with paved patio and lawn, ideal for relaxing or entertaining, enclosed by tall fencing for privacy.

Front - Attractive kerb appeal with low-maintenance lawn and a double-width driveway, ideal for two vehicles.

If you're searching for a modern, spacious home with parking, a garden, and versatile living space - look no further. Whether you're a growing family or a working professional, this immaculate rental offers comfort, style, and convenience.

Don't miss out - book your viewing today!

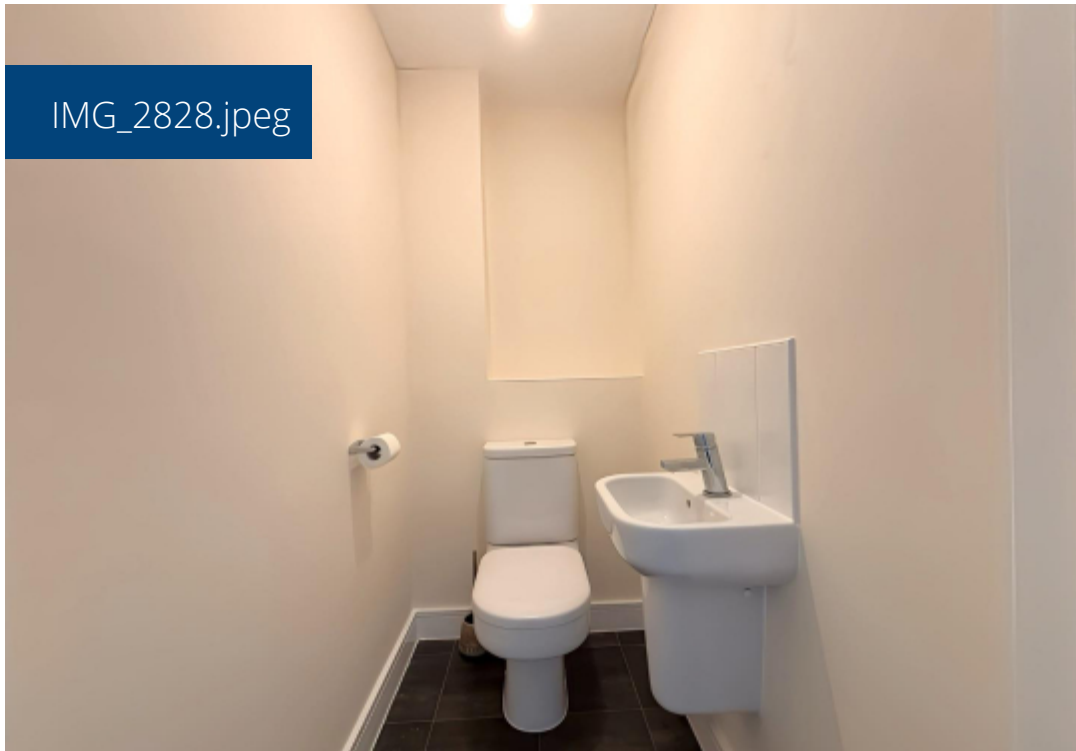
IMG_2568.jpeg



IMG_2776.jpeg



IMG_2828.jpeg



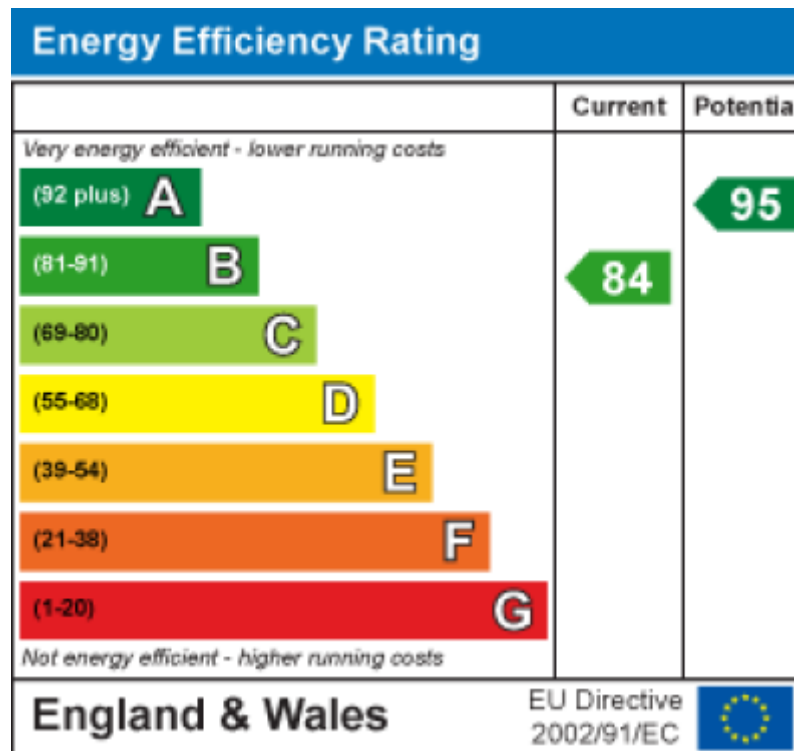
IMG_2905.jpeg





This floorplan is for illustrative purposes only and the location of doors, windows and other items are approximate.

Agents notes: All measurements are approximate and for general guidance only and whilst every attempt has been made to ensure accuracy, they must not be relied on. The fixtures, fittings and appliances referred to have not been tested and therefore no guarantee can be given that they are in working order. Internal photographs are reproduced for general information and it must not be inferred that any item shown is included with the property. Copyright © 2025 14430791 Registered Office: , 549 Bloxwich Road, Bloxwich, WS3 2XD



Telephone: 01922 322988



www.remaxlocalestateagents.co.uk