



£2,500 Monthly

Bassett Crescent, West Bromwich

Detached House | 5 Bedrooms | 3 Bathrooms

01922 322988



www.remaxlocalestateagents.co.uk



Step Inside

Key Features

- Five Bedroom Detached House
- Rent To Rent Option Available
- Modern Fitted Kitchen With Integrated Appliances And Quooker Tap
- Two Reception Rooms
- Three Bathrooms
- Ample Off Road Parking And Double Garage
- Large Garden With Decking Area
- Sought After Location
- Central Heating And Double Glazing
- Furnished

Property Description

AVAILABLE NOW *OPEN HOUSE WEDNESDAY 3RD SEPTEMBER AT 6PM*

RE/MAX Elite are pleased to present this beautiful home in one of the most sought after areas in West Bromwich. This five bedroom detached property boasts spacious areas throughout, whilst having all the benefits of being within close proximity to local amenities. Rent to rent option available.

The property will be furnished and briefly comprises of an entrance hallway, through lounge, second reception room, kitchen diner with integrated appliances and Quooker tap, separate utility room and ground floor W.C. The first floor encompasses a landing area leading to three bedrooms, master with en-suite and family bathroom, whilst the second floor has landing area leading to two bedrooms and a shower room.

The property also benefits from having off road parking in the form of a driveway and double garage. The residence also benefits from a large rear garden with decking area, gas central heating and double glazing throughout.

Please call or email to book in a viewing!

Main Particulars

AVAILABLE NOW *OPEN HOUSE WEDNESDAY 3RD SEPTEMBER AT 6PM*

RE/MAX Elite are pleased to present this beautiful home in one of the most sought after areas in West Bromwich. This five bedroom detached property boasts spacious areas throughout, whilst having all the benefits of being within close proximity to local amenities. Rent to rent option available.

The property will be furnished and briefly comprises of an entrance hallway, through lounge, second reception room, kitchen diner with integrated appliances and Quooker tap, separate utility room and ground floor W.C. The first floor encompasses a landing area leading to three bedrooms, master with en-suite and family bathroom, whilst the second floor has landing area leading to two bedrooms and a shower room.

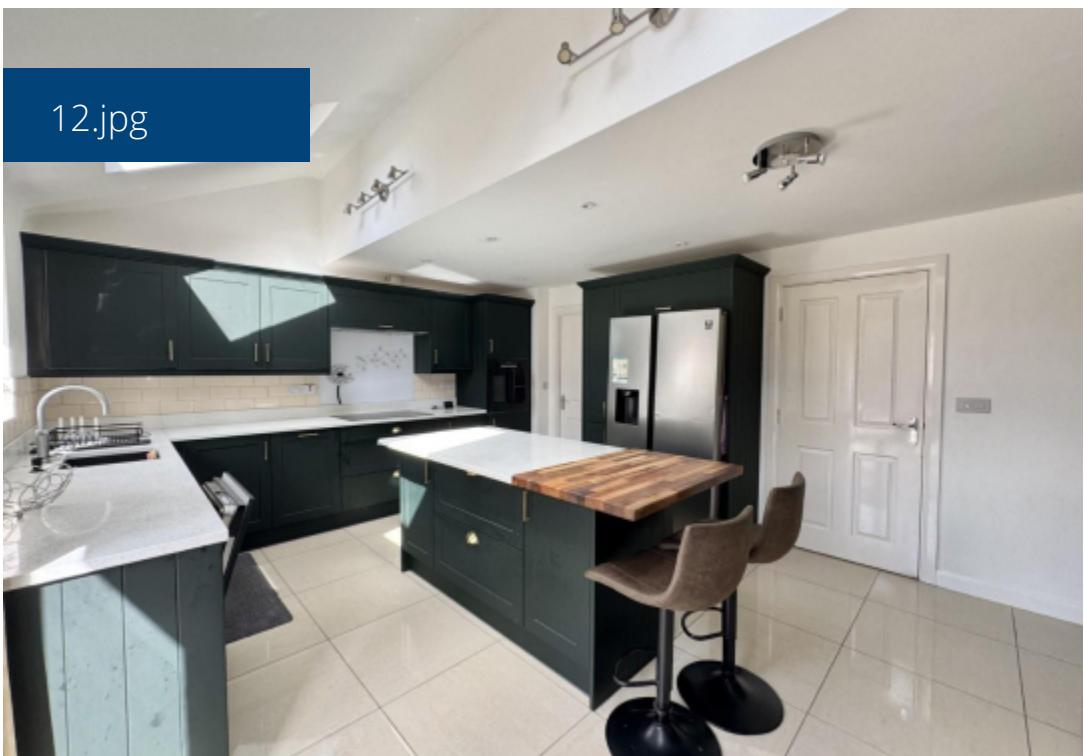
The property also benefits from having off road parking in the form of a driveway and double garage. The residence also benefits from a large rear garden with decking area, gas central heating and double glazing throughout.

Please call or email to book in a viewing!

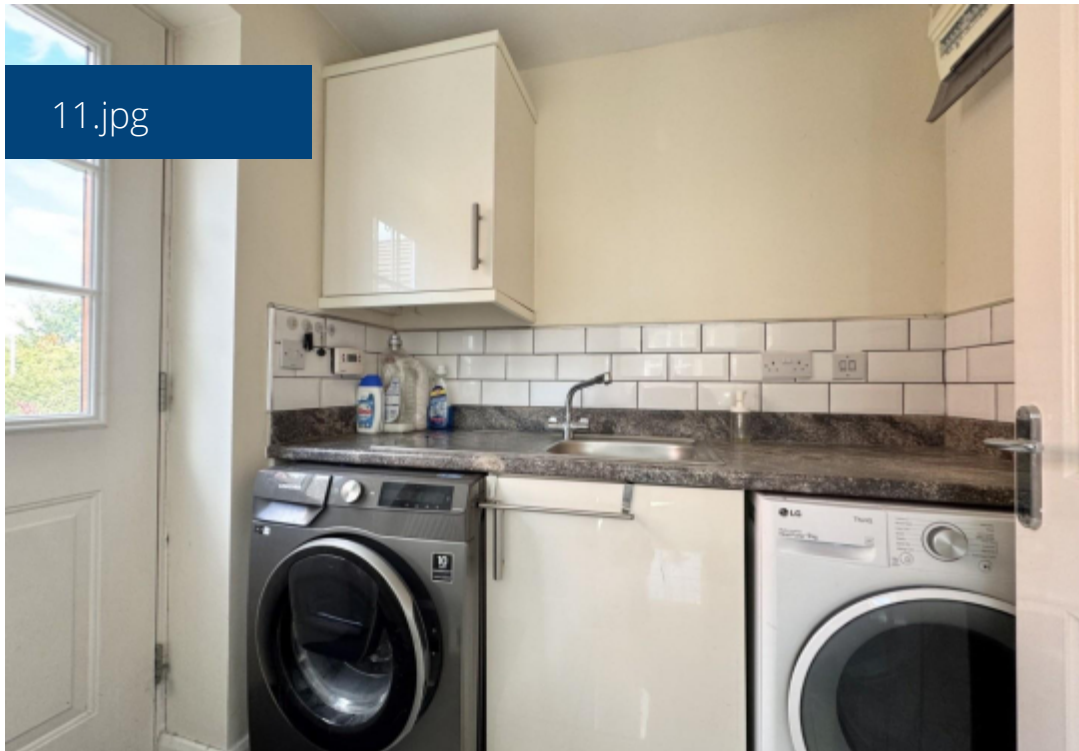
8.jpg



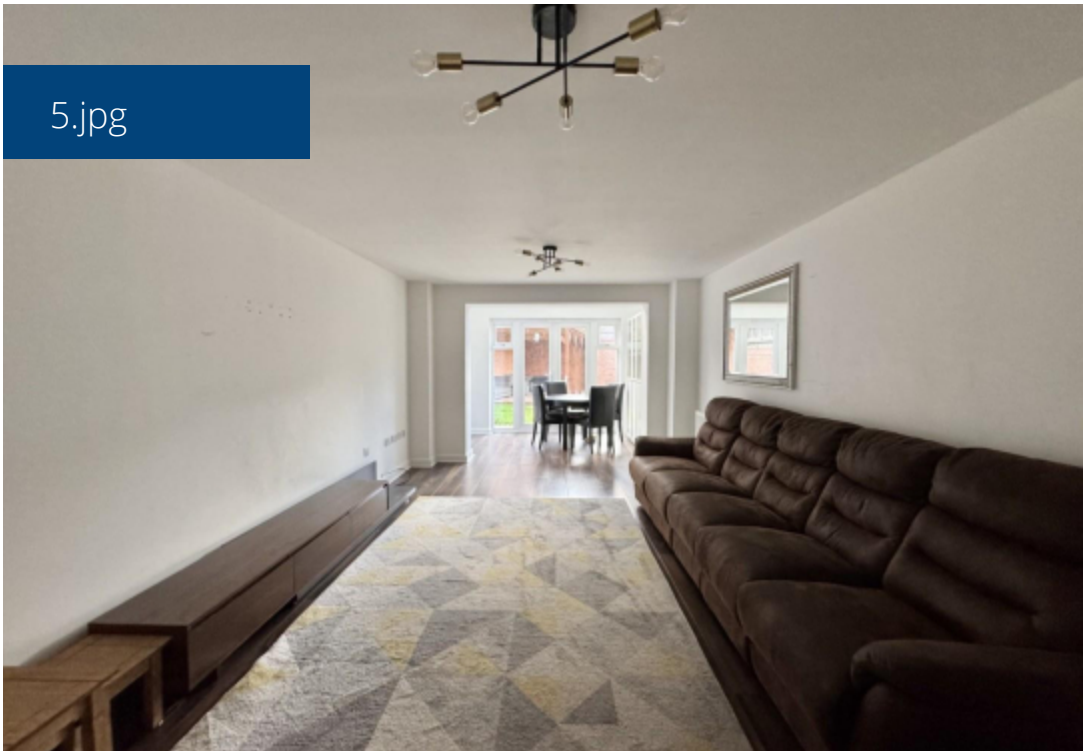
12.jpg

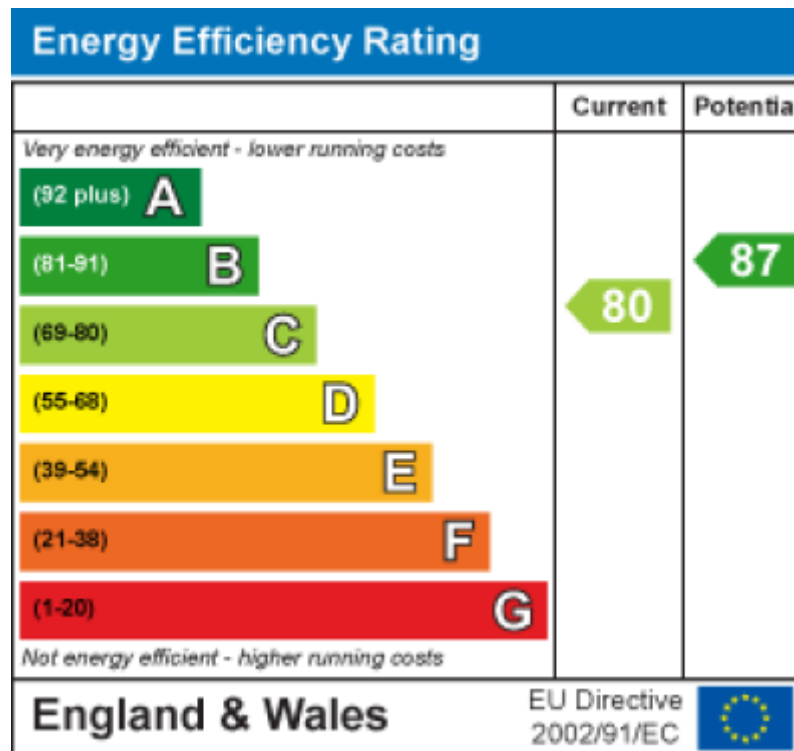


11.jpg



5.jpg





Telephone: 01922 322988



www.remaxlocalestateagents.co.uk