



£270,000

Somerfield Close, Walsall

Detached House | 3 Bedrooms | 2 Bathrooms

01922 322988



www.remaxlocalestateagents.co.uk



Step Inside

Key Features

- DETACHED FAMILY HOME ON CORNER PLOT
- THREE BEDROOMS AND TWO BATHROOMS
- DINING ROOM
- SPACIOUS LOUNGE WITH FEATURE FIREPLACE
- DINING KITCHEN WITH BREAKFAST BAR
- DOUBLE GLAZING AND GAS CENTRAL HEATING
- ENCLOSED REAR GARDEN
- DOUBLE GARAGE - ONE HALF CONVERTED TO A ROOM
- OFF-STREET PARKING VIA DOUBLE DRIVEWAY
- CLOSE TO SCHOOLS, AMENITIES & TRANSPORT LINKS

Property Description

DETACHED FAMILY HOME ON GENEROUS CORNER PLOT IN SHELFIELD WITH DOUBLE GARAGE & VERSATILE OUTBUILDING

This three-bedroom detached family home is perfectly positioned on a spacious corner plot in the sought-after area of Shelfield. Offering a generous floor plan with multiple reception rooms, two bathrooms, and a double garage-this home is ideal for families needing space and flexibility. A standout feature is the converted garage room, providing an excellent home office, gym, or hobby space. The low-maintenance rear garden is fully enclosed and ideal for entertaining, while a double driveway adds excellent off-road parking.

Room-by-Room Breakdown

Ground Floor

Porch / Entrance Hall

Welcoming entry with space for coats and shoes, leading into the main hallway.

Living Room - 5.09m x 3.51m (16'8" x 11'6")

Spacious and bright lounge with large bay-style front window, feature fireplace with mantle, and warm neutral tones. A fantastic family relaxation area.

Dining Room - 5.14m x 2.46m (16'10" x 8'1")

Directly connected to both kitchen and living room. Offers ample space for family meals or entertaining. Modern feature wall and laminate flooring.

Dining Kitchen - 3.46m x 2.91m (11'4" x 9'7")

Well-equipped fitted kitchen with integrated oven, gas hob, breakfast bar with stools, and access to the rear garden. A perfect social hub for families or gatherings.

Shower Room - Ground Floor

Tiled space with shower cubicle, WC, and hand basin. Ideal for guests or downstairs convenience.

First Floor

Bedroom 1 - 4.12m x 3.01m (13'6" x 9'11")

Large double bedroom with two windows offering dual aspect natural light. Plenty of space for wardrobes and storage.

Bedroom 2 - 3.58m x 3.20m (11'9" x 10'6")

Another good-sized double with views to the rear garden. Neutral décor, ideal as a child's room or guest room.

Bedroom 3 - 2.50m x 1.99m (8'2" x 6'6")

Perfect as a single room, home office or nursery.

Family Bathroom - First Floor

Modern suite with panelled bath, WC, wash basin

Main Particulars

DETACHED FAMILY HOME ON GENEROUS CORNER PLOT IN SHELFIELD WITH DOUBLE GARAGE & VERSATILE OUTBUILDING

This three-bedroom detached family home is perfectly positioned on a spacious corner plot in the sought-after area of Shelfield. Offering a generous floor plan with multiple reception rooms, two bathrooms, and a double garage-this home is ideal for families needing space and flexibility. A standout feature is the converted garage room, providing an excellent home office, gym, or hobby space. The low-maintenance rear garden is fully enclosed and ideal for entertaining, while a double driveway adds excellent off-road parking.

Room-by-Room Breakdown

Ground Floor

Porch / Entrance Hall

Welcoming entry with space for coats and shoes, leading into the main hallway.

Living Room - 5.09m x 3.51m (16'8" x 11'6")

Spacious and bright lounge with large bay-style front window, feature fireplace with mantle, and warm neutral tones. A fantastic family relaxation area.

Dining Room - 5.14m x 2.46m (16'10" x 8'1")

Directly connected to both kitchen and living room. Offers ample space for family meals or entertaining. Modern feature wall and laminate flooring.

Dining Kitchen - 3.46m x 2.91m (11'4" x 9'7")

Well-equipped fitted kitchen with integrated oven, gas hob, breakfast bar with stools, and access to the rear garden. A perfect social hub for families or gatherings.

Shower Room - Ground Floor

Tiled space with shower cubicle, WC, and hand basin. Ideal for guests or downstairs convenience.

First Floor

Bedroom 1 - 4.12m x 3.01m (13'6" x 9'11")

Large double bedroom with two windows offering dual aspect natural light. Plenty of space for wardrobes and storage.

Bedroom 2 - 3.58m x 3.20m (11'9" x 10'6")

Another good-sized double with views to the rear garden. Neutral décor, ideal as a child's room or guest room.

Bedroom 3 - 2.50m x 1.99m (8'2" x 6'6")

Perfect as a single room, home office or nursery.

Family Bathroom - First Floor

Modern suite with panelled bath, WC, wash basin

Outbuilding

Garage - 5.60m x 3.20m (18'4" x 10'6")

Ideal for secure parking or workshop space.

Room - 4.00m x 3.40m (13'1" x 11'2")

Currently used as a multi-functional room - suitable for an office, gym, salon, or home studio.

With its spacious rooms, double garage, and ideal location close to local schools, shops, and transport routes, this property is ready to meet the demands of modern family life.

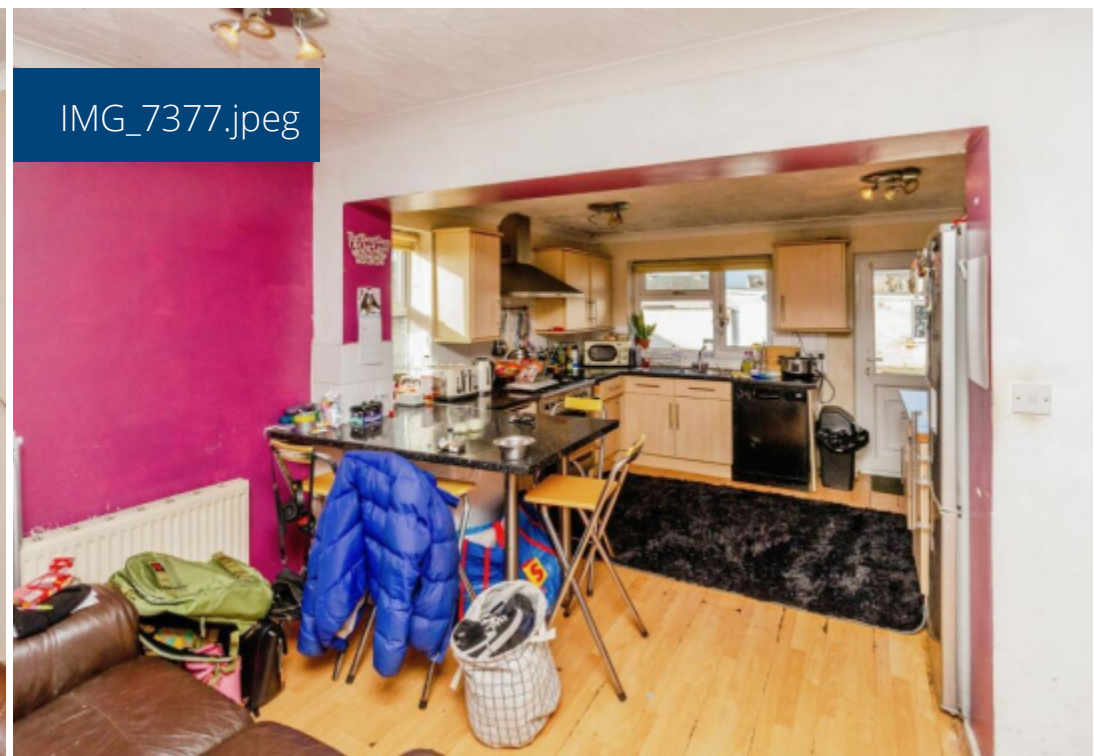
Whether you're working from home, need extra storage, or simply want room to grow - this home ticks all the boxes.

Don't miss your chance - book your viewing today!

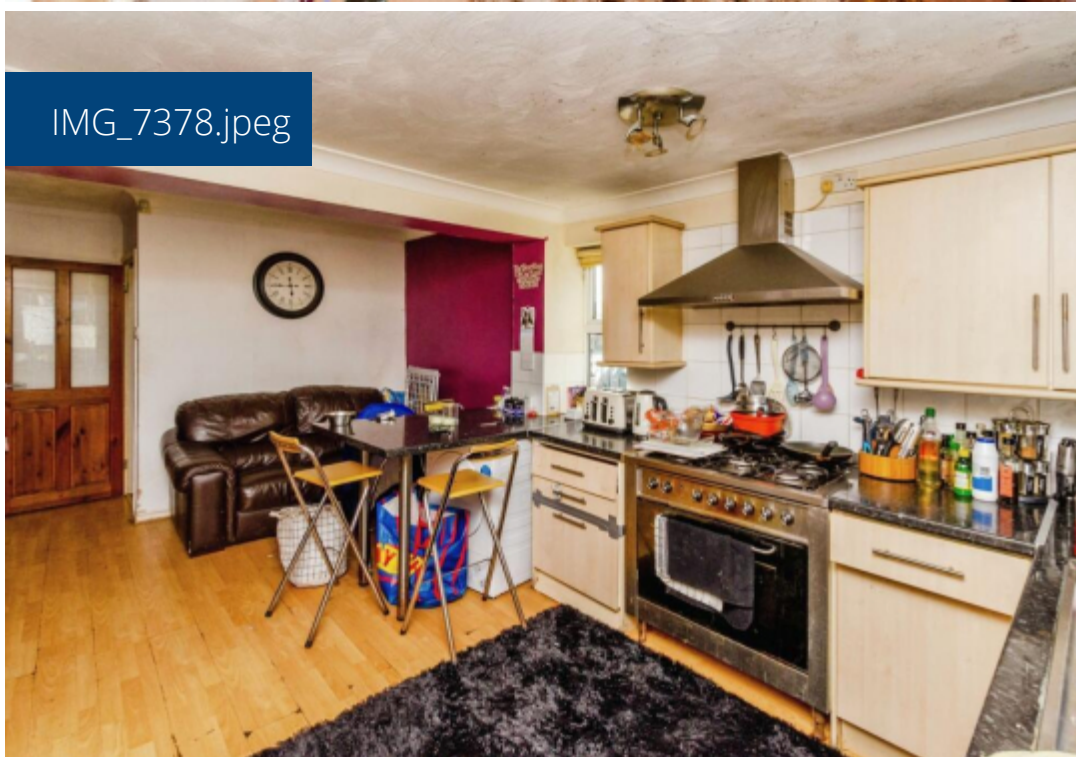
IMG_7376.jpeg



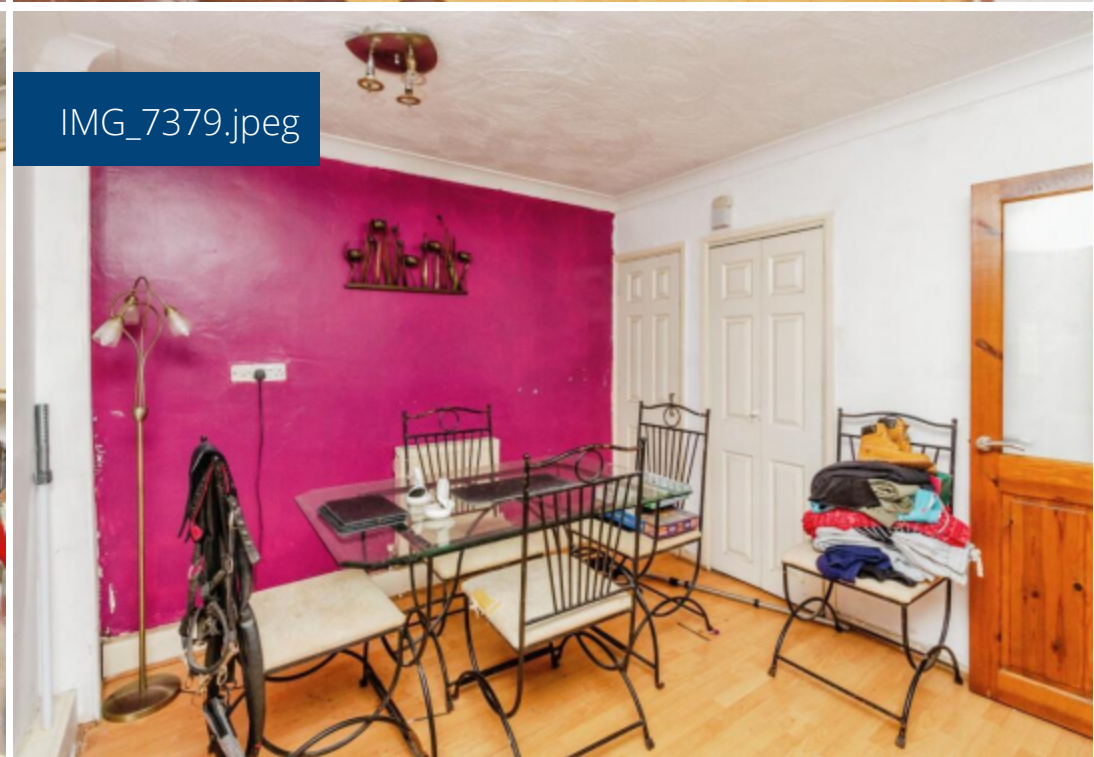
IMG_7377.jpeg

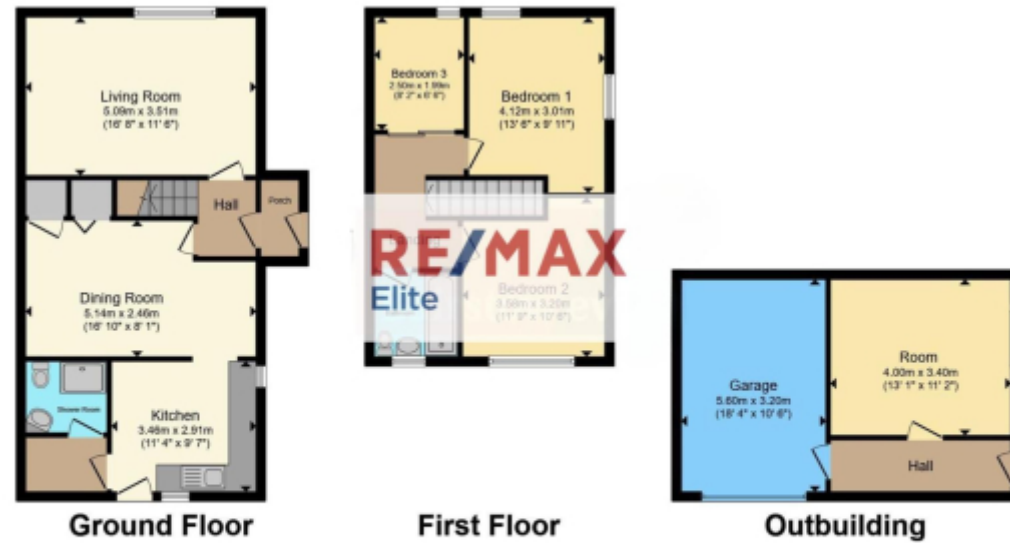


IMG_7378.jpeg



IMG_7379.jpeg



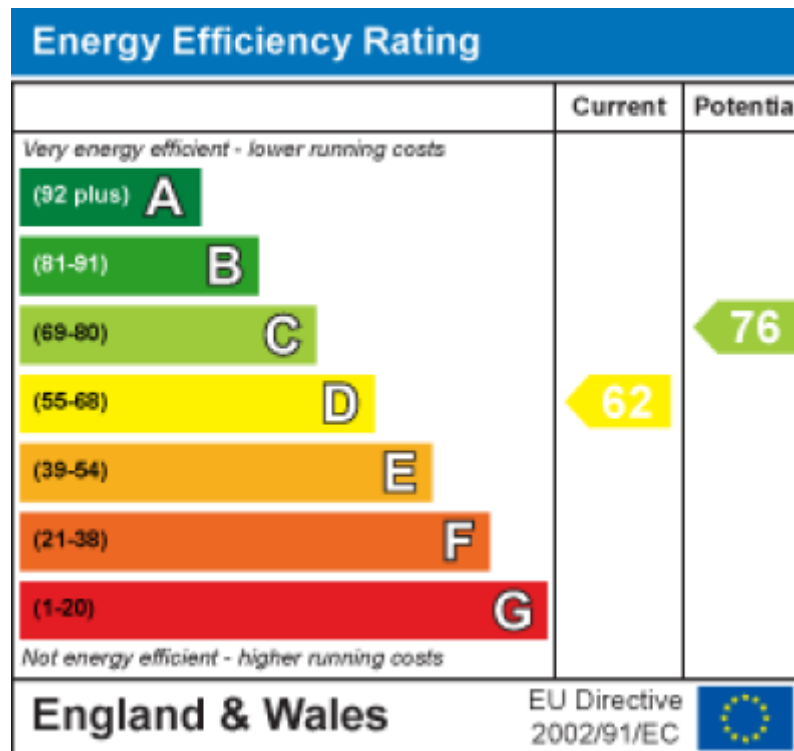


Total floor area 128.1 m² (1,379 sq.ft.) approx

This floor plan is for illustrative purposes only. It is not drawn to scale. Any measurements, floor areas (including any total floor area), openings and orientation are approximate. No details are guaranteed, they cannot be relied upon for any purpose and they do not form part of any agreement. No liability is taken for any error, omission or misstatement. A party must rely upon its own inspection(s). Powered by www.focalagent.com

This floorplan is for illustrative purposes only and the location of doors, windows and other items are approximate.

Agents notes: All measurements are approximate and for general guidance only and whilst every attempt has been made to ensure accuracy, they must not be relied on. The fixtures, fittings and appliances referred to have not been tested and therefore no guarantee can be given that they are in working order. Internal photographs are reproduced for general information and it must not be inferred that any item shown is included with the property. Copyright © 2025 14430791 Registered Office: , 549 Bloxwich Road, Bloxwich, WS3 2XD



Telephone: 01922 322988



www.remaxlocalestateagents.co.uk