



£1,400 Monthly

Lode Lane, Solihull

Semi-Detached House | 3 Bedrooms | 1 Bathroom

01922 322988



[www.remaxlocalestateagents.co.uk](http://www.remaxlocalestateagents.co.uk)



# Step Inside

---

## Key Features

- Available Immediately
- Three Bedrooms
- Semi-Detached House
- Close To Solihull Town Centre
- Two Receptions
- Modern Kitchen With Utility Area
- Large Garden
- Driveway
- Family Bathroom And Downstairs W.C.
- Central Heating And Double Glazing

## Property Description

\*AVAILABLE NOW\* \*OPEN HOUSE WEDNESDAY 12TH NOVEMBER AT 6PM\*

Well presented three bedroom semi-detached house located close to Solihull Town Centre.

The property will be unfurnished and briefly comprises of two reception rooms, modern kitchen with utility area, three bedrooms, family bathroom and newly fitted downstairs W.C.

The property also benefits from having a large rear garden and a driveway.

Please call or email to book in a viewing!

## Main Particulars

\*AVAILABLE NOW\* \*OPEN HOUSE WEDNESDAY 12TH NOVEMBER AT 6PM\*

Well presented three bedroom semi-detached house located close to Solihull Town Centre.

The property will be unfurnished and briefly comprises of two reception rooms, modern kitchen with utility area, three bedrooms, family bathroom and newly fitted downstairs W.C.

The property also benefits from having a large rear garden and a driveway.

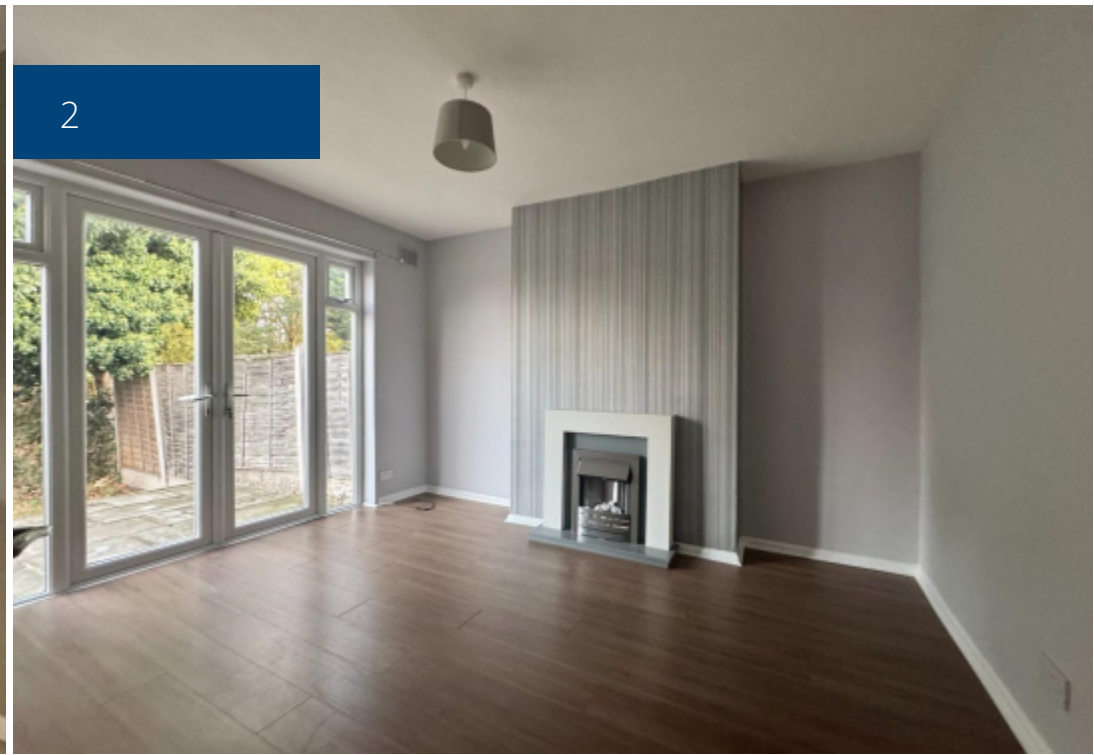
Please call or email to book in a viewing!



5



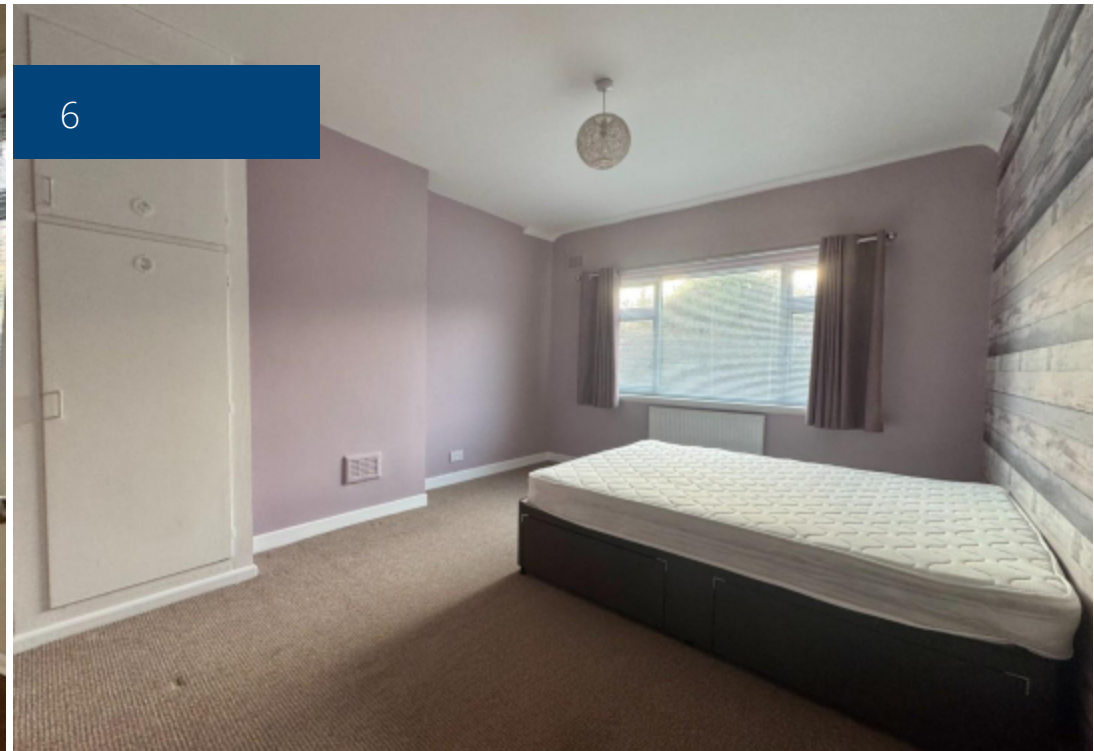
2

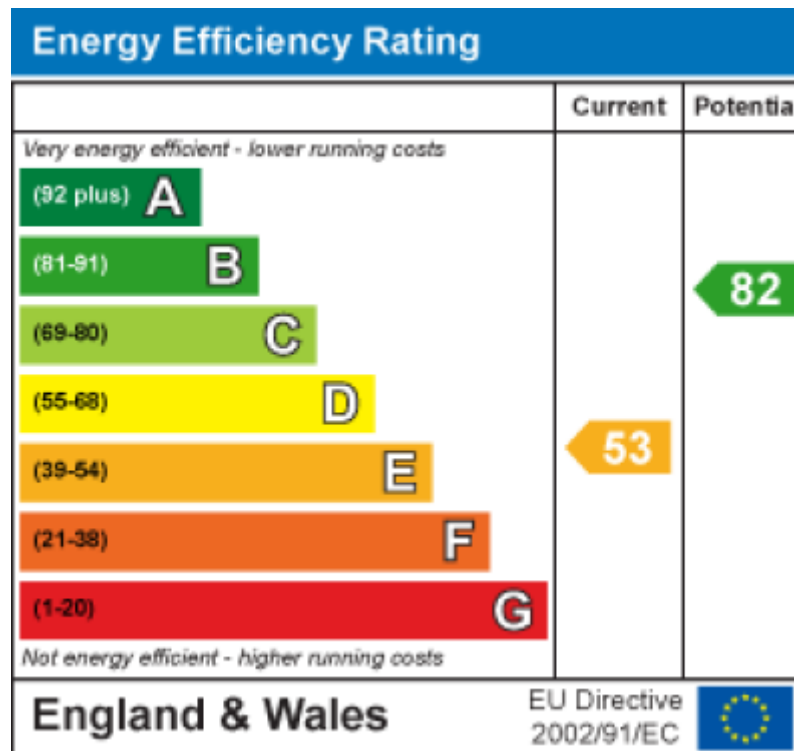


3



6





Telephone: 01922 322988



[www.remaxlocalestateagents.co.uk](http://www.remaxlocalestateagents.co.uk)