



£775 Monthly

Wolverhampton Street, Walsall

Flat | 1 Bedroom | 1 Bathroom

01922 322988



www.remaxlocalestateagents.co.uk



Step Inside

Key Features

- ONE DOUBLE BEDROOM
- OPEN PLAN LIVING / KITCHEN AREA
- MODERN BATHROOM SUITE
- GATED PARKING
- SECURE VIDEO ENTRY SYSTEM
- ELECTRIC HEATING
- UNFURNISHED
- TOWN CENTRE LOCATION
- VACANT - READY FOR IMMEDIATE MOVE-IN

Property Description

MODERN 1-BED APARTMENT TO RENT - VACANT & READY TO MOVE IN

Set within a secure gated development in the heart of Walsall town centre, this well-proportioned 1-bedroom apartment offers stylish, low-maintenance living with excellent commuter access. The apartment is now vacant and ready for immediate occupation.

Photos shown were taken while the property was occupied - it is now completely empty and move-in ready.

Main Particulars

MODERN 1-BED APARTMENT TO RENT - VACANT & READY TO MOVE IN

Set within a secure gated development in the heart of Walsall town centre, this well-proportioned 1-bedroom apartment offers stylish, low-maintenance living with excellent commuter access. The apartment is now vacant and ready for immediate occupation.

Photos shown were taken while the property was occupied - it is now completely empty and move-in ready.

Located in a popular development with gated parking, this apartment ticks all the boxes. Ideal for working professionals who value secure, town-centre living. Don't miss your chance - book a viewing now before it's snapped up.

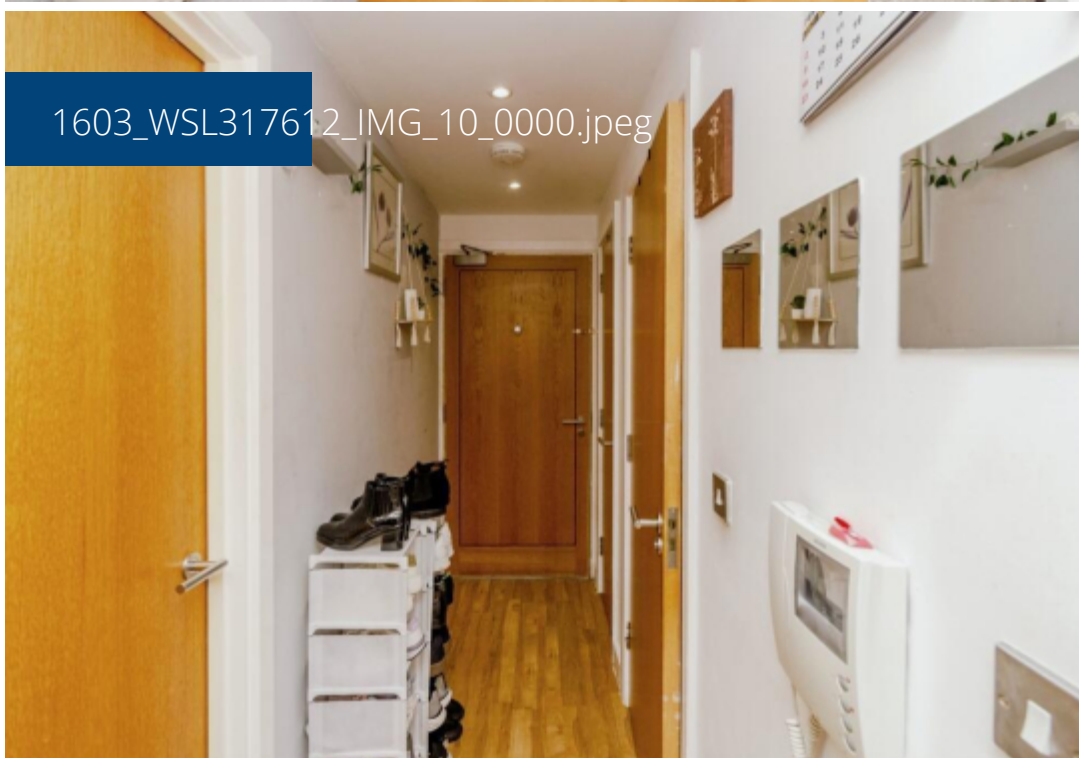
1603_WSL317612_IMG_06_0000.jpeg



1603_WSL317612_IMG_03_0000.jpeg

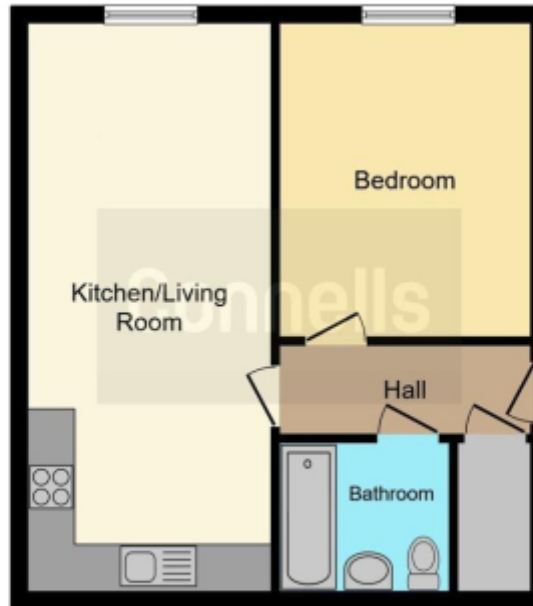


1603_WSL317612_IMG_10_0000.jpeg



1603_WSL317612_IMG_11_0000.jpeg

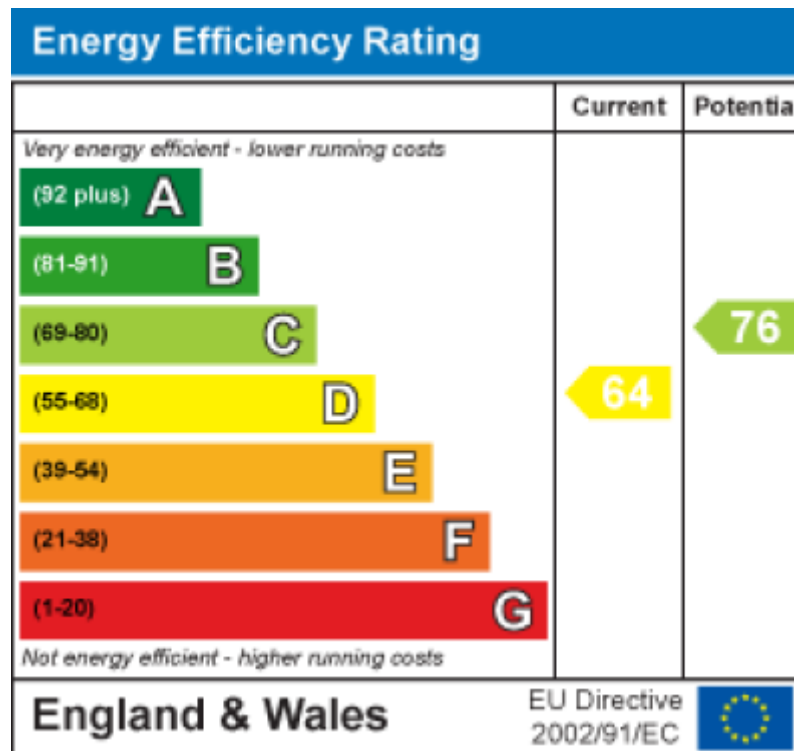




This floor plan is for illustrative purposes only. It is not drawn to scale. Any measurements, floor areas (including any total floor area), openings and orientation are approximate. No details are guaranteed, they cannot be relied upon for any purpose and they do not form part of any agreement. No liability is taken for any error, omission or misstatement. A party must rely upon its own inspection(s). Powered by www.focalagent.com

This floorplan is for illustrative purposes only and the location of doors, windows and other items are approximate.

Agents notes: All measurements are approximate and for general guidance only and whilst every attempt has been made to ensure accuracy, they must not be relied on. The fixtures, fittings and appliances referred to have not been tested and therefore no guarantee can be given that they are in working order. Internal photographs are reproduced for general information and it must not be inferred that any item shown is included with the property. Copyright © 2026 14430791 Registered Office: , 549 Bloxwich Road, Bloxwich, WS3 2XD



Telephone: 01922 322988



www.remaxlocalestateagents.co.uk