



£1,200 Monthly

Yew Tree Lane, Solihull

Flat | 2 Bedrooms | 2 Bathrooms

01922 322988



www.remaxlocalestateagents.co.uk



Step Inside

Key Features

- Available Immediately
- Second Floor Apartment
- Two Double Bedrooms With Fitted Wardrobes
- Spacious Lounge
- Fitted Kitchen With Appliances Including Brand New Oven
- En-Suite Shower Room And Family Bathroom
- Two Allocated Parking Spaces
- Close To Solihull Town Centre
- Furnished

Property Description

AVAILABLE NOW *OPEN HOUSE WEDNESDAY 4TH FEBRUARY AT 6PM*

RE/MAX are delighted to offer this well presented two bedroom second floor apartment situated close to Solihull Town Centre and local amenities

The property will be furnished and briefly comprises of a spacious lounge, fitted kitchen with appliances including a brand new oven, two double bedrooms with fitted wardrobes, master en-suite shower room and a family bathroom.

The property also benefits from having two allocated parking spaces.

Please call or email to book in a viewing!

Main Particulars

AVAILABLE NOW *OPEN HOUSE WEDNESDAY 4TH FEBRUARY AT 6PM*

RE/MAX are delighted to offer this well presented two bedroom second floor apartment situated close to Solihull Town Centre and local amenities

The property will be furnished and briefly comprises of a spacious lounge, fitted kitchen with appliances including a brand new oven, two double bedrooms with fitted wardrobes, master en-suite shower room and a family bathroom.

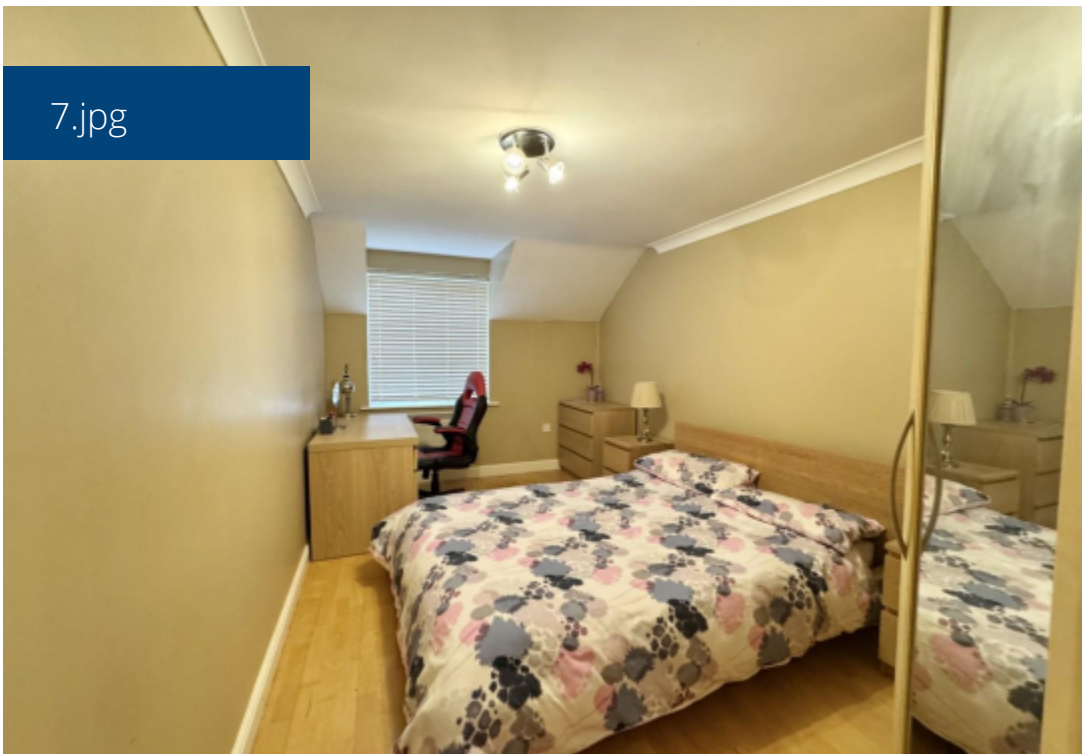
The property also benefits from having two allocated parking spaces.

Please call or email to book in a viewing!

4.jpg



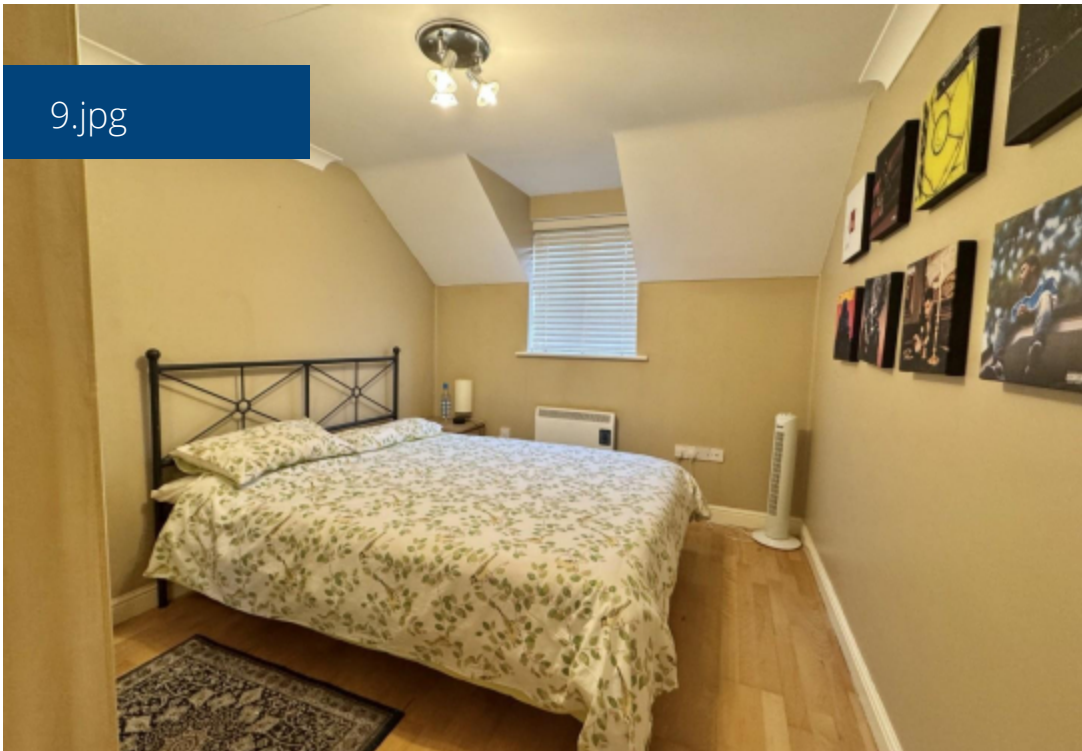
7.jpg

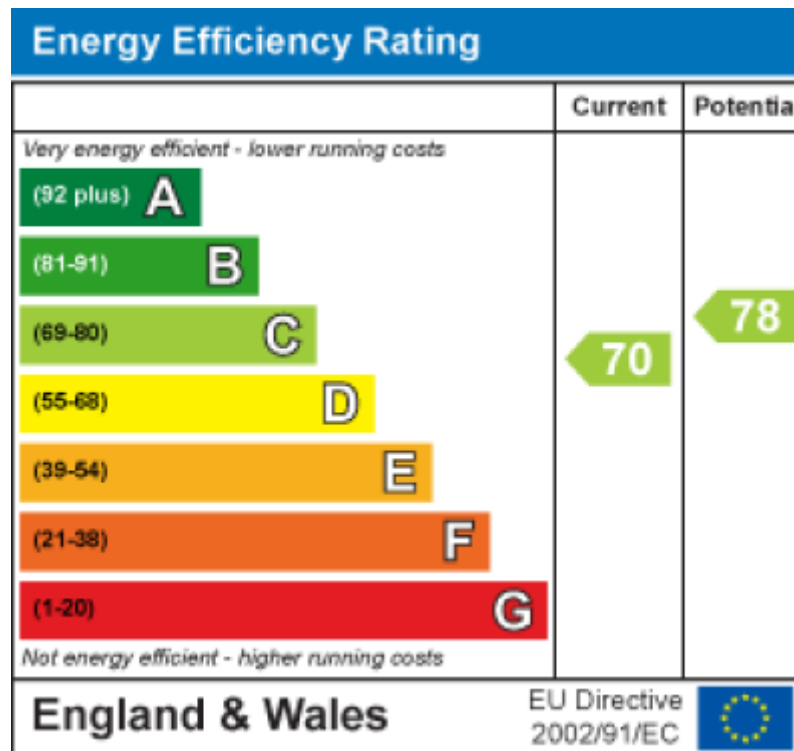


6.jpg



9.jpg





Telephone: 01922 322988



www.remaxlocalestateagents.co.uk