



£1,600 Monthly

Bluebell Croft, Northfield, Birmingham

Semi-Detached House | 4 Bedrooms | 2 Bathrooms

01922 322988



www.remaxlocalestateagents.co.uk



Step Inside

Key Features

- Available Immediately
- Four Bedrooms
- Semi-Detached House
- Spacious Lounge
- Fitted Kitchen With Dining Area
- Family Bathroom, En-Suite And Downstairs W.C.
- Garage With Utility Area And Driveway With Electric Vehicle Charger
- Enclosed Rear Garden
- Fully Boarded Loft With Lighting And Ladder
- Central Heating And Double Glazing

Property Description

AVAILABLE NOW

Well presented four bedroom semi-detached house in a cul-de-sac location close to local amenities and transport links.

The property will be unfurnished and briefly comprises of a spacious lounge, fitted kitchen with dining area and new flooring, four well-proportioned bedrooms, family bathroom, en-suite and downstairs W.C.

The property has been redecorated throughout and further benefits from a front driveway with an electric vehicle charger, a garage with utility area, a private enclosed rear garden and a fully boarded loft with lighting and ladder.

Please call or email to book in a viewing!

Main Particulars

AVAILABLE NOW

Well presented four bedroom semi-detached house in a cul-de-sac location close to local amenities and transport links.

The property will be unfurnished and briefly comprises of a spacious lounge, fitted kitchen with dining area and new flooring, four well-proportioned bedrooms, family bathroom, en-suite and downstairs W.C.

The property has been redecorated throughout and further benefits from a front driveway with an electric vehicle charger, a garage with utility area, a private enclosed rear garden and a fully boarded loft with lighting and ladder.

Please call or email to book in a viewing!

5



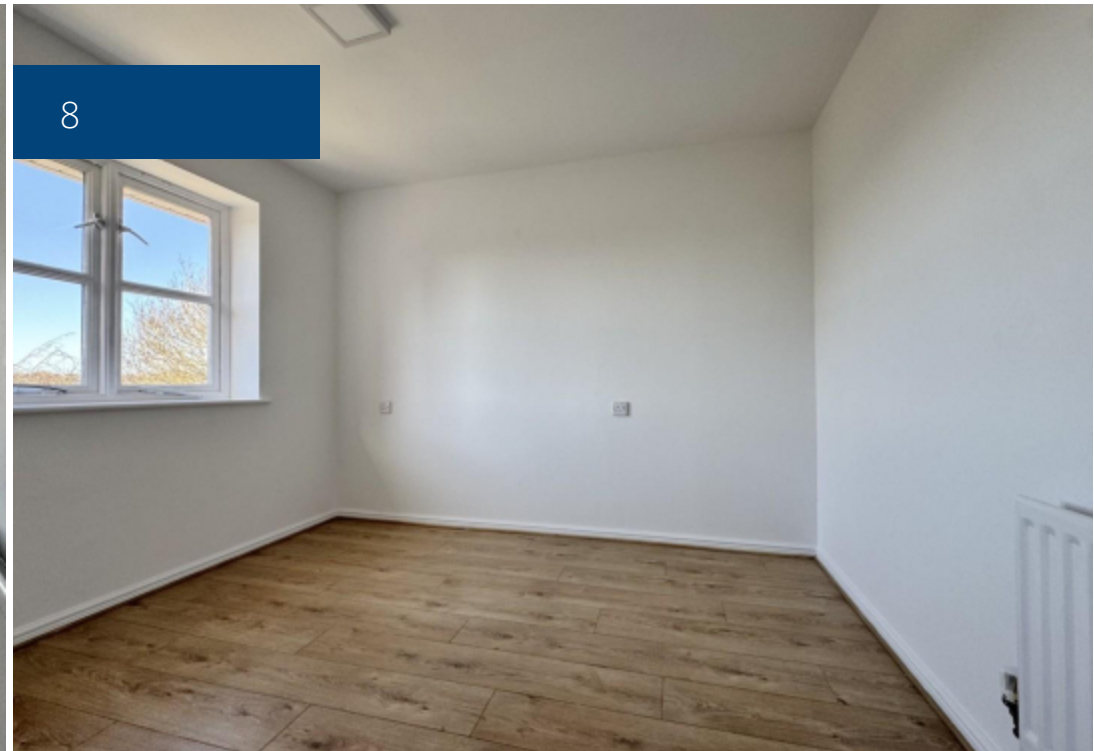
6




7



8



Energy Efficiency Rating

	Current	Potential
Very energy efficient - lower running costs		
(92 plus) A		
(81-91) B		
(69-80) C	70	75
(55-68) D		
(39-54) E		
(21-38) F		
(1-20) G		
Not energy efficient - higher running costs		
England & Wales	EU Directive 2002/91/EC	

Telephone: 01922 322988



www.remaxlocalestateagents.co.uk