



£1,500 Monthly

Ashtree Road, Walsall

Semi-Detached House

01922 322988



www.remaxlocalestateagents.co.uk



Step Inside

Key Features

- SPACIOUS FIVE-ROOM FAMILY HOME
- RECENTLY REFURBISHED THROUGHOUT
- FULLY FURNISHED THROUGHOUT
- MODERN OPEN PLAN KITCHEN/LIVING SPACE
- TWO CONTEMPORARY SHOWER ROOMS
- LARGE PRIVATE REAR GARDEN
- SPACIOUS PATIO AREA
- DOUBLE GLAZING & CENTRAL HEATING
- PREVIOUSLY CONFIGURED AS AN HMO
- AVAILABLE IMMEDIATELY

Property Description

SPACIOUS AND VERSATILE FAMILY HOME WITH FLEXIBLE FIVE-ROOM ACCOMMODATION AND LARGE REAR GARDEN

RE/MAX Elite are delighted to offer this recently refurbished semi-detached home to the rental market, providing spacious and versatile accommodation across two floors.

The property has previously been configured as an HMO and is currently arranged with five rooms, offering exceptional flexibility. The additional rooms can be used as bedrooms, a living room, home office, playroom, second reception room or dressing room, allowing tenants to tailor the layout to suit their lifestyle.

The accommodation also benefits from modern interiors throughout, two contemporary shower rooms and a generous rear garden, making it an ideal home for a large family or those requiring additional living or working space.

Early viewing is highly recommended to appreciate the size, flexibility and excellent condition of this unique rental property.

Main Particulars

SPACIOUS AND VERSATILE FAMILY HOME WITH FLEXIBLE FIVE-ROOM ACCOMMODATION AND LARGE REAR GARDEN

RE/MAX Elite are delighted to offer this recently refurbished semi-detached home to the rental market, providing spacious and versatile accommodation across two floors.

The property has previously been configured as an HMO and is currently arranged with five rooms, offering exceptional flexibility. The additional rooms can be used as bedrooms, a living room, home office, playroom, second reception room or dressing room, allowing tenants to tailor the layout to suit their lifestyle.

The accommodation also benefits from modern interiors throughout, two contemporary shower rooms and a generous rear garden, making it an ideal home for a large family or those requiring additional living or working space.

Early viewing is highly recommended to appreciate the size, flexibility and excellent condition of this unique rental property.

Ground Floor -

Entrance Porch - 1.28m x 0.65m (4'2" x 2'1") - A useful enclosed entrance porch providing access into the property and additional space for coats and shoes.

Foyer - 2.06m x 1.12m (6'9" x 3'8") - Welcoming entrance foyer leading into the main accommodation with staircase access to the first floor.

Hallway - 1.64m x 1.87m (5'4" x 6'1") - Internal hallway connecting the ground floor rooms.

Open Plan Kitchen/Living Room - 4.43m x 3.69m & 3.09m x 3.84m (14'6" x 12'1" & 10' - A bright and spacious open-plan living area with modern fitted kitchen comprising matching wall and base units, integrated oven and hob, stainless steel sink, ample worktop space, and room for appliances. The living space offers excellent versatility for relaxing and entertaining.

Ground Floor Bedroom One (Primary Bedroom) - 2.37m x 2.29m (7'9" x 7'6") - Well-proportioned ground floor bedroom featuring neutral décor, radiator, and front-facing window allowing natural light.

Ground Floor Bedroom Two - 3.16m x 2.11m (10'4" x 6'11") - A further generous bedroom overlooking the rear garden, ideal as a guest room, office, or additional family bedroom.

Ground Floor Shower Room - 1.81m x 1.43m (5'11" x 4'8") - Modern shower room fitted with walk-in shower, WC, wash basin, contemporary wall panelling, and chrome fittings.

First Floor -

First Floor Landing - 2.63m x 1.50m (8'7" x 4'11") - Providing access to all first-floor accommodation.

First Floor Bedroom Three - 2.91m x 2.24m (9'6" x 7'4") - A bright and comfortable bedroom with rear-facing window and space for bedroom furnishings.

First Floor Bedroom Four - 1.63m x 3.20m (5'4" x 10'5") - Additional single bedroom suitable for a child's room, dressing room, or home office.

First Floor Bedroom Five - 1.80m x 4.82m (5'10" x 15'9") - An extended spacious bedroom offering excellent floor space and flexibility.

First Floor Shower Room - 1.52m x 2.56m (4'11" x 8'4") - Stylishly finished shower room featuring enclosed shower cubicle, vanity sink unit, WC, heated towel rail, and modern marble-effect wall finishes.

Outside - To the rear is a substantial private garden featuring a paved patio area leading to lawn space, offering excellent outdoor entertaining potential and room for landscaping improvements. To the front is a driveway area providing off-road parking potential subject to configuration.

Important Information - The property was previously configured and used as a HMO. Due to current Article 4 restrictions, the property may now only be used as a single residential dwelling unless the necessary planning consent is obtained from the local authority.

Contact RE/MAX Elite today to arrange a viewing and secure this fantastic home.



3c6a5544-
3357-4f87-
a1c8-
d1d0af58e32d.png



67a88e66-
eb7d-4878-
8e59-
e57b5a5e933a.png



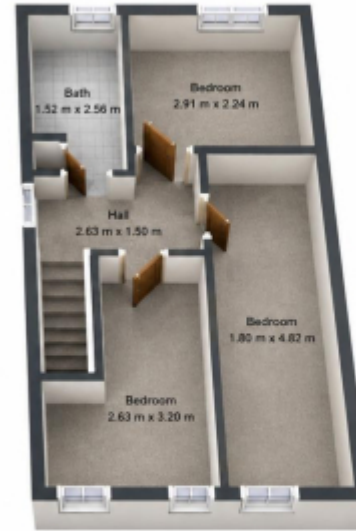
a562882f-
3985-4a90-
9389-
219ea491f48a.png



c3fc2a6a-
9033-41e2-
8da0-
7ba8f95bee5a.png



1st Floor



2nd Floor




TOTAL: 73 m²
 1st floor: 41 m², 2nd floor: 32 m²
 EXCLUDED AREAS: SCREENED PORCH: 1 m², WALLS: 8 m²

Floor Plan Created By Guidebook Apps. Measurements Deemed Highly Reliable But Not Guaranteed.

This floorplan is for illustrative purposes only and the location of doors, windows and other items are approximate.

Agents notes: All measurements are approximate and for general guidance only and whilst every attempt has been made to ensure accuracy, they must not be relied on. The fixtures, fittings and appliances referred to have not been tested and therefore no guarantee can be given that they are in working order. Internal photographs are reproduced for general information and it must not be inferred that any item shown is included with the property. Copyright © 2026 14430791 Registered Office: , 549 Bloxwich Road, Bloxwich, WS3 2XD

Energy Efficiency Rating

	Current	Potential
Very energy efficient - lower running costs		
(92 plus) A		
(81-91) B		88
(69-80) C		
(55-68) D	63	
(39-54) E		
(21-38) F		
(1-20) G		
Not energy efficient - higher running costs		
England & Wales	EU Directive 2002/91/EC	

Telephone: 01922 322988



www.remaxlocalestateagents.co.uk